



23, BLVD. J. BERTRAND
6000 CHARLEROI
BELGIUM
Tél: (0)71 31.80.91
Fax: (0)71 31.17.67
SOS: (0)71 70.15.27
WWW.ADAMSCOMPUTER.COM
MEILLEURS PRIX AVEC CONSEILS ET SERVICE COMPRIS
YOUR PARTNER OF CONFIDENCE SINCE 1986
B2C - B2B - B2D

SELEXION
meilleur et pas plus cher

LUNDI > VENDREDI
9:30 > 18 H
SAMEDI
9:30 > 12:30 H
INFO@ADAMSCOMPUTER.COM
SOS@ADAMSCOMPUTER.COM

AUDIO • VIDEO • ELECTRO • IT • TELECOM • PHOTO • CCTV • SAT

Network Cabling Catalog 2014

19" Product Range with Accessories

Patch - Installations Cables & Accessories

Fiber Optic



23, Blvd. Jacques Bertrand B-6000 Charleroi
WWW.ADAMSCOMPUTER.COM

Lundi > Vendredi
9:30 > 18 h
Samedi
9:30 > 12:30 h
Your partner of
confidence since 1986
SELEXION
meilleur et pas plus cher

AUDIO • VIDEO • ELECTRO • IT • TELECOM • PHOTO • CCTV • SAT

19" Product Range with Accessories - Page 3

19" Rail Concept (NL & FR) - Standard Unit Size	4
10" Wallmounted Rack 5U & 8U	5
19" Wallmounted Rack 5U	5
19" Wallmounted Bracket 2U-4U-8U	6
19" Wallmounted Rack 6U-7U-9U-12U-16U	6
19" Wallmounted Rack 2 Sectioned 6U-7U-9U-12U-16U-20U	6
19" Profile Rack 7U-9U-12U-16U-22U-32U-36U-42U-47U	7
19" Serverline Rack 18U-26U-36U-42U	8
19" Cable Management	9
19" Tray Accessories Compatibility	10 - 11
19" Tray Accessories Compatibility	12 - 13
19" Cooling System	14
19" Drawer and Accessories	15



Patch - Installation Cables & Accessories - Page 16

UTP Patch Cable Cat.5e - Cat.6	17
FTP Patch Cable Cat.5e / SSTP-PIMF Patch Cable Cat.6	18
SSTP/PIMF LSOH Patch Cable - Cat.6	19
Cat.5e - Cat.6 UTP Solid Unshielded Installation Cable	20
RJ45 Connectors & Boots	20
Cat.5e FTP Solid Shielded Cable & Outdoor Cable	21
Cat.5e S-FTP Solid Double Shielded Installation Cable	21
Cat.6 - Cat.6a FTP Solid Shielded Installation Cable LSOH	21
Cat.6a S-FTP Solid Double Shielded Cable LSOH	22
Cat.5e UTP Stranded Unshielded Cable	22
Cat.6a UTP Stranded Unshielded Cable LSOH	22
Cable Drum Roller	22
Patch Panel - Dummy Plug- LSA Punch Tools	23
Keystone Adapter	24
Keystone Patch Panel & Crimp Tools	25



Fiber Optic - Page 26

Fiber Optic Concept	27
Multimode OM1 Duplex 62,5/125 μ Patch Cable	28
Multimode OM2 Duplex 50/125 μ Patch Cable	28
Singlemode Duplex E2000 Patch Cable	28
E2000 Coupler 500m Simplex	28
Multimode OM3 Duplex 50/125 μ Patch Cable	29
Multimode OM4 Duplex 50/125 μ Patch Cable	29
Fiber Optic Pigtail, Simplex	29
Fiber Optic Connectors and Keystone Adapter	30
Splice Box & Accessories	31
Fiber Optic Tool Box & Fusion Splicer	32





23, BLVD. J. BERTRAND
6000 CHARLEROI
BELGIUM
Tél: (0)71 31.80.91
Fax: (0)71 31.17.67
SOS: (0)71 70.15.27



meilleur et pas plus cher



LUNDI > VENDREDI
9:30 > 18 H
SAMEDI
9:30 > 12:30 H
INFO@ADAMSCOMPUTER.COM
SOS@ADAMSCOMPUTER.COM

WWW.ADAMSCOMPUTER.COM
MEILLEURS PRIX AVEC CONSEILS ET SERVICE COMPRIS
YOUR PARTNER OF CONFIDENCE SINCE 1986
B2C - B2B - B2D

AUDIO • VIDEO • ELECTRO • IT • TELECOM • PHOTO • CCTV • SAT

19" Product Range with Accessories

ADAMS
COMPUTER

23, Blvd. Jacques Bertrand B-6000 Charleroi
WWW.ADAMSCOMPUTER.COM

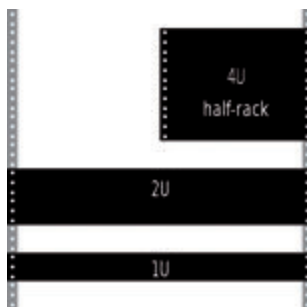
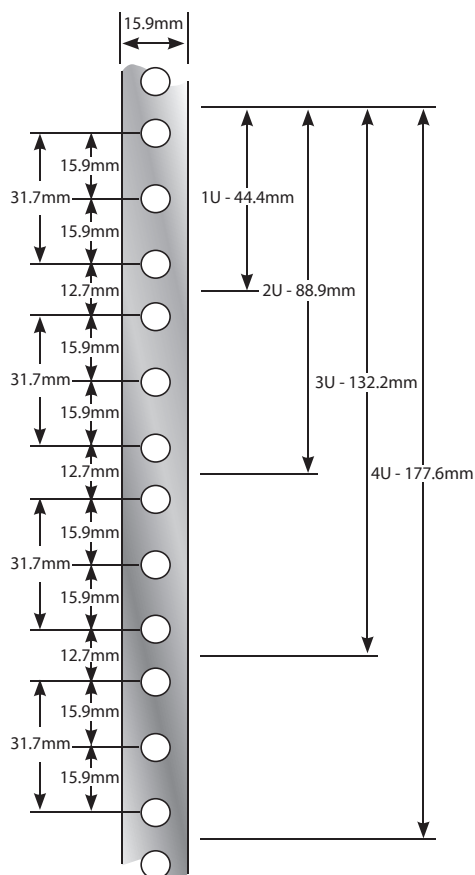
Lundi > Vendredi
9:30 > 18 h
Samedi
9:30 > 12:30 h

Your partner of
confidence since 1986
SELEXION
confiance et pas plus cher

AUDIO • VIDEO • ELECTRO • IT • TELECOM • PHOTO • CCTV • SAT

19" Elementary Concept

BASIS VAN 19-INCH RAILS PRINCIPE DE BASE D'UN RAIL 19 POUCES



Het 19-inch Rack is een standaard systeem om verschillende elektronische modules boven elkaar te plaatsen. Het 19-inch Rack bestaat uit twee verticale gevels in ijzer met een afstand van 18-inch (of 457.2 mm). Gaten zijn geboord op het frontale deel op regelmatige afstanden om een afstand te krijgen van 18 inch (of 457.2mm). Dit geeft een totale breedte van 19-inch (of 482,6mm).

De apparatuur die men in zo'n rack installeert geeft men weer met de term "rackable". De hoogte van die elementen is gewoon een veelvoud van de lengte genoemd U (voor eenheid) waarvan de grootte is ontwikkeld voor het systeem Eurocard. Een U is gelijk aan 1,75-inch (of 44,45 mm). 1U, 2U, 3U, 4U zijn gangbare maten.

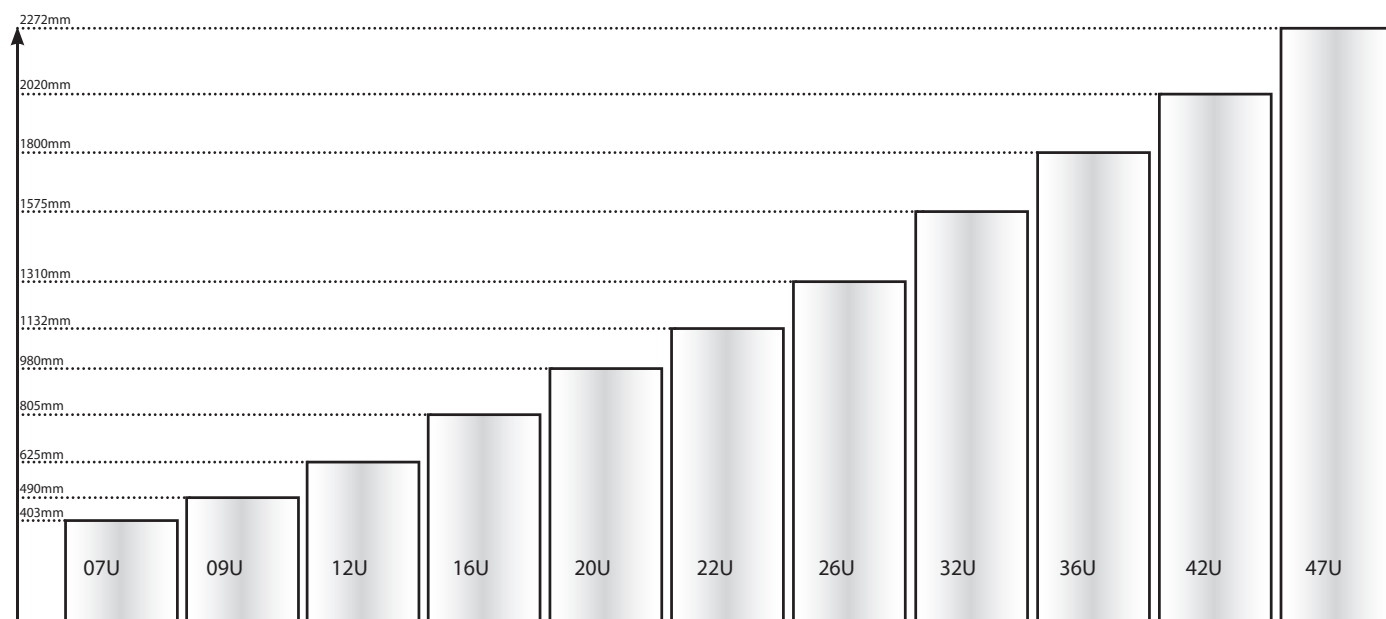
De 19-inch Racks worden vaak gebruikt in sectoren als telecommunicatie, IT, audio en video.

Le Rack 19 pouces est un système standard pour monter divers modules électroniques les uns au-dessus des autres. Le rack est constitué de deux façades verticales en métal espacées de 18 pouces (soit 457,2 millimètres). Des trous sont forés à intervalles réguliers sur la partie frontale du rack de manière à ce qu'ils soient espacés de 18,3 pouces (soit 464.82 millimètres). Ce qui donne une largeur totale de rack de 19 pouces (soit 482.6 millimètres).

Les équipements destinés à être installés dans un tel rangement sont souvent qualifiés de rackables. La hauteur d'un élément est habituellement un multiple d'une longueur nommée U (pour unité) dont la dimension a été développée pour le système Eurocard. Un U vaut 1,75 pouces (44,45 millimètres). 1U, 2U, 3U, 4U sont des tailles courantes.

Les racks 19 pouces sont très utilisés dans les domaines des télécommunications, de l'informatique, de l'audio et de la vidéo.

19" Standard Unit Size



De aangegeven hoogte in mm kan veranderen afhankelijk van de gekozen kast. Sommige kasten zijn hoger want ze hebben een uitneembare module in het dak van het kast.

La hauteur indiquée en mm peut changer selon le type d'armoire choisi, certaines armoires sont plus hautes car elles possèdent un module amovible dans le toit de l'armoire.

Customize your Flight Case

A flightcase is a transportation container used to safely pack and transport anything that needs protection. Heavier versions may be referred to as road cases, and the terms are fairly interchangeable, with road case being the more common term in the United States.

Originally, such cases were used by rock and roll touring bands to transport sound equipment, lighting equipment and musical instruments. Today, flightcases are used to transport various types of delicate equipment.

In addition to providing protection, the case can allow rack mount equipment to be left largely interconnected and ready for use.

Contact Sales for more Info



10" Wallmounted Rack 5U - 8U

10" SOHO Line cabinets provides an economical solution for wall mount mini-cabinets. The SOHOLine features a modular, sturdy and compact design, ideal installation for Small Offices, Home Office applications.

- Stable housing for wall or standing installation of 1.1 mm thick steel sheet colour black
- Two 10" snap-in bars, front, cable entrance with brush strip from bottom and top
- Single pane safety-glass door, housing completed grounded



Reference	Color	Dimensions HxWxD
TDN1005UL		5U - 315(H)x285(W) x445(D) mm
TDN1005ULW		
TDN1008UL		8U
TDN1008ULW		

19" Wallmounted Rack 5U - 2U Vertical and 3U Horizontal

- Special for patch panel and switch
- Ideal for 3U application
- 475 x 495 x 140 mm

Mounting type:

- Vertical opening on wall
- Horizontal opening on wall
- On ceiling or under suspend ceiling
- On floor or under raised floor

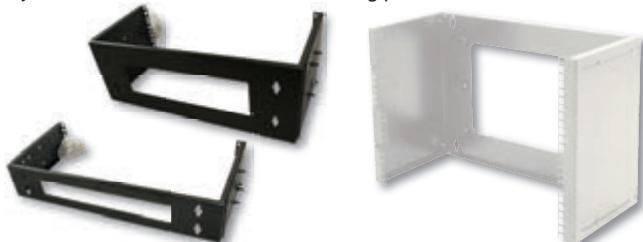


Reference	Dimensions HxWxD
TDN19WALL	475x495x140 mm

19" Wallmounted Series

19" Wallmounted Bracket 2U - 4U - 8U

The Logon-Pro 19" wall mounting patch brackets are economical solutions for the safe installation of 19" components. The depth of the mounting rails is adjustable, which offers variable mounting possibilities.



Reference	Color	Dimensions WxD
TDN19PB2U-BL		2U - (W)530 x up to (D)350
TDN19PB2UW		
TDN19PB4U-BL		4U - (W)530 x up to (D)350
TDN19PB4UW		
TDN19PB8U-BL		8U - (W)530 x up to (D)350
TDN19PB8UW		

19" Wallmounted Rack Mounted 6U - 7U - 9U - 12U - 16U

- Side sections detachable and lockable
- Ventilation slots for passive ventilation and exhaustion
- Protection rating IP 40
- Safety-Glass door with steel frame and lockable
- 2 x 19" profile rails
- Cable entry on top and bottom
- Incl. 8 pieces mounting set
- Grounded



Reference	Color	Dimensions HxWxD
TDN1906U-BL		6U - (H)360x(W)600x(D)450
TDN1906UW		
TDN1907U-BL		7U - (H)403x(W)600x(D)450
TDN1907UW		
TDN1909U-BL		9U - (H)450x(W)600x(D)450
TDN1909UW		
TDN1912U-BL		12U - (H)645x(W)600x(D)450
TDN1912UW		
TDN1916U-BL		16U - (H)780x(W)600x(D)450
TDN1916UW		

19" Wallmounted Rack Unmounted 7U - 9U - 12U

- 1,1mm - 1,5mm strong sheet steel with high load capacity
- Ventilation slots for passive ventilation and exhaustion
- Safety-Glass door with steel frame and lockable
- 2 x 19" profile rails
- Cable entry on top and bottom



Reference	Color	Dimensions HxWxD
TDN1907US-BL		7U - (H)360x(W)520x(D)450
TDN1907USW		
TDN1909US-BL		9U - (H)490x(W)520x(D)450
TDN1909USW		
TDN1912US-BL		12U - (H)580x(W)520x(D)450
TDN1912USW		

19" Wallmounted Rack 2 Sectioned 6U - 7U - 9U - 12U - 16U - 20U

- The Logon Pro double section Wall Cabinets are made of a robust steel construction with a minimum of seams. Ideal for all current IT- and Telecommunication applications.
- Side sections detachable and lockable
- Ventilation slots for passive ventilation and exhaustion
- Double section, lockable
- Protection rating IP 40
- Safety-Glass door with steel frame and lockable
- 2 x 19" profile rails
- Cable entry on top and bottom
- Incl. 8 pieces mounting set
- Grounded



Reference	Color	Dimensions HxWxD
TDN1906U3-BL		6U - (H)360x(W)600x(D)550
TDN1906U3W		
TDN1907U3-BL		7U - (H)403x(W)600x(D)550
TDN1907U3W		
TDN1909U3-BL		9U - (H)450x(W)600x(D)550
TDN1909U3W		
TDN1912U3-BL		12U - (H)625x(W)600x(D)550
TDN1912U3W		
TDN1916U3-BL		16U - (H)780x(W)600x(D)550
TDN1916U3W		
TDN1920U3-BL		16U - (H)980x(W)600x(D)550
TDN1920U3W		

19" Mounted Rack

7U - 9U - 12U - 16U → 47U

- Side sections detachable and lockable
- Ventilation slots for passive ventilation and exhaustion
- Protection rating IP 40
- Safety-Glass door with steel frame and lockable
- 2 x 19" profile rails
- Cable entry on top and bottom
- Incl. 8 pieces mounting set
- Grounded
- Extensive accessories available



19" Mounted Rack (W)600x(D)600mm

Reference	Color	Dimensions HxWxD
TDN1907U66-BL		7U - (H)360x(W)600x(D)560
TDN1907U66W		
TDN1909U66-BL		9U - (H)470x(W)600x(D)560
TDN1909U66W		
TDN1912U66-BL		12U - (H)625x(W)600x(D)560
TDN1912U66W		
TDN1916U66-BL		16U - (H)780x(W)600x(D)560
TDN1916U66W		
TDN1922U66-BL		22U - (H)1135x(W)600x(D)560
TDN1922U66W		
TDN1932U66-BL		32U - (H)1573x(W)600x(D)560
TDN1932U66W		
TDN1942U66-BL		42U - (H)2020x(W)600x(D)560
TDN1942U66W		

19" Mounted Rack (W)600x(D)800mm

Reference	Color	Dimensions HxWxD
TDN1916U68-BL		16U - (H)806x(W)600x(D)800
TDN1916U68W		
TDN1922U68-BL		22U - (H)1135x(W)600x(D)800
TDN1922U68W		
TDN1926U68-BL		26U - (H)1341x(W)600x(D)800
TDN1926U68W		
TDN1932U68-BL		32U - (H)1573x(W)600x(D)800
TDN1932U68W		
TDN1942U68-BL		42U - (H)2100x(W)600x(D)800
TDN1942U68W		
TDN1947U68-BL		47U - (H)2244x(W)600x(D)800
TDN1947U68W		

19" Mounted Rack (W)800x(D)800mm

Reference	Color	Dimensions HxWxD
TDN1932U88-BL		32U - (H)1573x(W)800x(D)800
TDN1932U88W		
TDN1942U88-BL		42U - (H)2112x(W)800x(D)800
TDN1942U88W		

19" Mounted Rack (W)600x(D)1000mm

Reference	Color	Dimensions HxWxD
TDN1926U610-BL		26U - (H)1310x(W)600x(D)1000
TDN1932U610W		
TDN1936U610-BL		36U - (H)1766x(W)600x(D)1000
TDN1936U610W		
TDN1942U610-BL		42U - (H)2020x(W)600x(D)1000
TDN1942U610W		



19" Server Series

Serverline 19" Case With Cooling Module 18U - 26U - 36U - 42U

- Perforated doors
- Side sections detachable and lockable
- Ventilation slots for passive ventilation and exhaustion
- Protection class IP 20
- Perforated steel front door, opening angle 180° with lockable swing handle
- Dual lockable door front & rear
- Perforated single-wing steel front & Perforated double-wing rear doors
- Large cable entry with rubber-edged sliding mechanism on the floor, as protection against cable breakage and damage, and ensures the fixation of large bundles of cable.
- Cable entries with brush strips on the floor and in the rear level
- Inclusive fan module on the roof
- Inclusive 4 castor
- Inclusive screws set

Reference	Color	Dimensions HxWxD
TDN19SRV18UL		18U -
TDN19SRV18UW		(H)1080x(W)600x(D)1000
TDN19SRV26UL		26U -
TDN19SRV26UW		(H)1430x(W)600x(D)1000
TDN19SRV36UL		36U -
TDN19SRV36UW		(H)1870x(W)600x(D)1000
TDN19SRV42UW		42U -
TDN19SRV42UL		(H)1992x(W)600x(D)1000
TDN19SRV42U8L		42U -
TDN19SRV42U8W		(H)1992x(W)800x(D)1000
TDN19SRV42U12L		42U -
TDN19SRV42U12W		(H)1992x(W)800x(D)1200



Integrated Cooling Module
With Thermostat

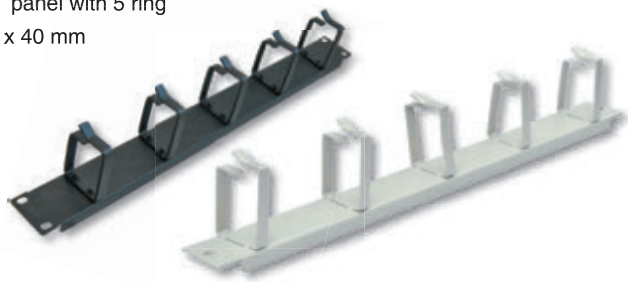


Roof & Bottom Cable Slot
Removable 19" Rails
For More Comfort



19" Panel with 5 Cable Rings 40x40mm

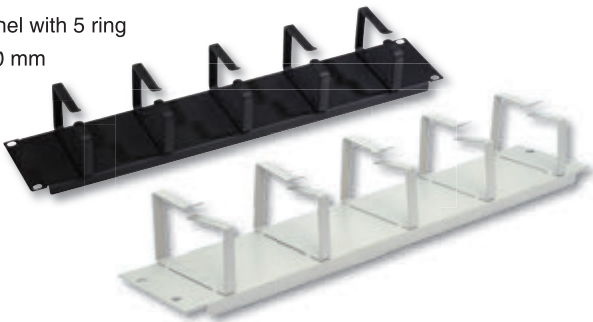
- 19" panel with 5 ring
- 40 x 40 mm



Reference	Color	Dimensions HxWxD
TDN19ORG1U-BL		1U - 40x40mm
TDN19ORG1UW		

19" Panel with 5 Cable Rings 40x60mm

- 19" panel with 5 ring
- 40 x 60 mm



Reference	Color	Dimensions HxWxD
TDN19ORG2U-BL		2U - 40x60mm
TDN19ORG2UW		

19" Cable Ring 45x75m



Reference	Color	Dimensions HxWxD
TDN19ORG-1BL		1pcs - 45x75mm
TDN19ORG1W		

19" Cable Management 1U



Reference	Color	Unit
TDN19ORG6U-BL		1U
TDN19ORG6UW		

19" Cable Management 1U



Reference	Color	Unit
TDN19ORG10U-BL		1U
TDN19ORG10UW		

19" Cable Management 2U



Reference	Color	Unit
TDN19ORG11U-BL		2U
TDN19ORG11UW		

19" Panel Cable Management with Brush

19" Panel Cable Management with Brush



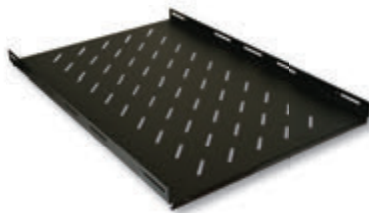
Reference	Color	Unit
TDN19ORG3U-BL		1U
TDN19ORG3UW		

Reference	Color	Unit
TDN19ORG8U-BL		1U
TDN19ORG8UW		

19" Accessories

19" Fixed Tray For 1000mm Depth Rack

• 1U - (H)35x(W)x495x(D)750



Reference	Color	Dimensions HxWxD
TDN19TRAY110BL		1U - (H)35x(W)x495x(D)750
TDN19TRAY110W		

19" Fixed Tray For 800mm Depth Rack

• 1U - (H)45x(W)x465x(D)450



Reference	Color	Dimensions HxWxD
TDN19TRAY180BL		1U - (H)45x(W)x465x(D)450
TDN19TRAY180W		

19" Telescopic Tray For 750mm Depth Rack

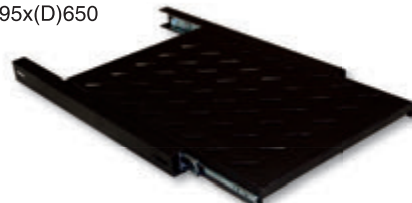
• 1U x 500 x 750 (HxWxD)



Reference	Color	Dimensions HxWxD
TDN19TRAY175BL		1U - (H)50x(W)x495x(D)750
TDN19TRAY175W		

19" Telescopic Tray For 650mm Depth Rack

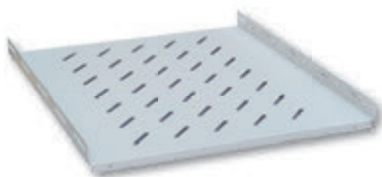
• 1U - (H)50x(W)x495x(D)650



Reference	Color	Dimensions HxWxD
TDN19TRAY165BL		1U - (H)50x(W)x495x(D)650
TDN19TRAY165W		

19" Fixed Tray For 400mm Depth Rack

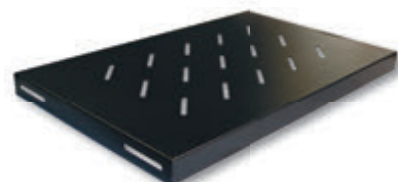
• 1U - (H)45x(W)x465x(D)400



Reference	Color	Dimensions HxWxD
TDN19TRAY140BL		1U - (H)45x(W)x465x(D)400
TDN19TRAY140W		

19" Fixed Tray For 350mm Depth Rack

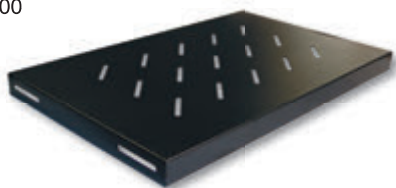
• 1U x 500 x 350 (HxWxD)



Reference	Color	Dimensions HxWxD
TDN19TRAY160BL		1U - (H)50x(W)x495x(D)350
TDN19TRAY160W		

19" Fixed Tray For 300mm Depth Rack

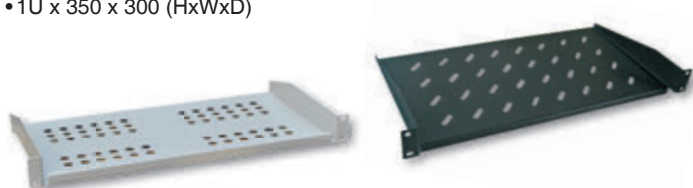
• 1U - (H)30x(W)x465x(D)300



Reference	Color	Dimensions HxWxD
TDN19TRAY130BL		1U - (H)30x(W)x465x(D)300
TDN19TRAY130W		

19" Fixed Tray

• 1U x 350 x 300 (HxWxD)



Reference	Color	Dimensions HxWxD
TDN19TRAY1-BL		1U - (H)44x(W)x350x(D)300
TDN19TRAY1W		

19" Universal Tray

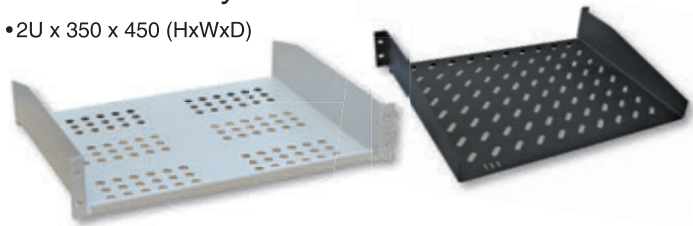
• 1U x 450 x 750 ↔ 45 (HxWxD)



Reference	Color	Dimensions HxWxD
TDN19TRAYUNI		1U - 45x450x750
TDN19TRAYUNIW		

19" Fixed Tray

• 2U x 350 x 450 (HxWxD)



Reference	Color	Dimensions HxWxD
TDN19TRAY2-BL		1U - (H)88x(W)x350x(D)450
TDN19TRAY2W		

Tray Compatibility for all 19" Wallmounted Rack Unmounted 7U - 9U - 12U

Reference / Tray	TDN19TRAYUNI	TDN19TRAY1-BL	TDN19TRAY2-BL	TDN19TRAY110BL	TDN19TRAY130BL	TDN19TRAY140BL	TDN19TRAY160BL	TDN19TRAY165BL	TDN19TRAY175BL	TDN19TRAY180BL
	TDN19TRAYUNI-W	TDN19TRAY1-W	TDN19TRAY2-W	TDN19TRAY110-W	TDN19TRAY130-W	TDN19TRAY140-W	TDN19TRAY160-W	TDN19TRAY165-W	TDN19TRAY175-W	TDN19TRAY180-W
TDN1907US-BL		✓	✓		✓					
TDN1907USW		✓	✓		✓					
TDN1909US-BL		✓	✓		✓					
TDN1909USW		✓	✓		✓					
TDN1912US-BL		✓	✓		✓					
TDN1912USW		✓	✓		✓					

Tray Compatibility for all 19" Wallmounted Rack Mounted 6U - 7U - 9U - 12U - 16U

Reference / Tray	TDN19TRAYUNI	TDN19TRAY1-BL	TDN19TRAY2-BL	TDN19TRAY110BL	TDN19TRAY130BL	TDN19TRAY140BL	TDN19TRAY160BL	TDN19TRAY165BL	TDN19TRAY175BL	TDN19TRAY180BL
	TDN19TRAYUNI-W	TDN19TRAY1-W	TDN19TRAY2-W	TDN19TRAY110-W	TDN19TRAY130-W	TDN19TRAY140-W	TDN19TRAY160-W	TDN19TRAY165-W	TDN19TRAY175-W	TDN19TRAY180-W
TDN1906U-BL		✓	✓			✓				
TDN1906UW		✓	✓			✓				
TDN1907U-BL		✓	✓			✓				
TDN1907UW		✓	✓			✓				
TDN1909U-BL		✓	✓			✓				
TDN1909UW		✓	✓			✓				
TDN1912U-BL		✓	✓			✓				
TDN1912UW		✓	✓			✓				
TDN1916U-BL		✓	✓			✓				
TDN1916UW		✓	✓			✓				

Tray Compatibility for all 19" Wallmounted Rack 2 Sectioned 6U - 7U - 9U - 12U - 16U

Reference / Tray	TDN19TRAYUNI	TDN19TRAY1-BL	TDN19TRAY2-BL	TDN19TRAY110BL	TDN19TRAY130BL	TDN19TRAY140BL	TDN19TRAY160BL	TDN19TRAY165BL	TDN19TRAY175BL	TDN19TRAY180BL
	TDN19TRAYUNI-W	TDN19TRAY1-W	TDN19TRAY2-W	TDN19TRAY110-W	TDN19TRAY130-W	TDN19TRAY140-W	TDN19TRAY160-W	TDN19TRAY165-W	TDN19TRAY175-W	TDN19TRAY180-W
TDN1906U3-BL	✓	✓	✓			✓				
TDN1906U3W	✓	✓	✓			✓				
TDN1907U3-BL	✓	✓	✓			✓				
TDN1907U3W	✓	✓	✓			✓				
TDN1909U3-BL	✓	✓	✓			✓				
TDN1909U3W	✓	✓	✓			✓				
TDN1912U3-BL	✓	✓	✓			✓				
TDN1912U3W	✓	✓	✓			✓				
TDN1916U3-BL	✓	✓	✓			✓				
TDN1916U3W	✓	✓	✓			✓				

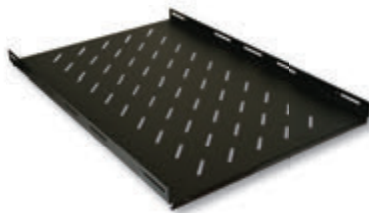
Tray Compatibility for all Serverline 19" Case With Cooling Module 18U - 26U - 36U - 42U

Reference / Tray	TDN19TRAYUNI	TDN19TRAY1-BL	TDN19TRAY2-BL	TDN19TRAY110BL	TDN19TRAY130BL	TDN19TRAY140BL	TDN19TRAY160BL	TDN19TRAY165BL	TDN19TRAY175BL	TDN19TRAY180BL
	TDN19TRAYUNI-W	TDN19TRAY1-W	TDN19TRAY2-W	TDN19TRAY110-W	TDN19TRAY130-W	TDN19TRAY140-W	TDN19TRAY160-W	TDN19TRAY165-W	TDN19TRAY175-W	TDN19TRAY180-W
TDN19SRV18UL	✓	✓	✓	✓		✓		✓		
TDN19SRV18UW	✓	✓	✓	✓		✓		✓		
TDN19SRV26UL	✓	✓	✓	✓		✓		✓		
TDN19SRV26UW	✓	✓	✓	✓		✓		✓		
TDN19SRV36UL	✓	✓	✓	✓		✓		✓		
TDN19SRV36UW	✓	✓	✓	✓		✓		✓		
TDN19SRV42UW	✓	✓	✓	✓		✓		✓		
TDN19SRV42UL	✓	✓	✓	✓		✓		✓		
TDN19SRV42U8L	✓	✓	✓	✓		✓		✓	✓	
TDN19SRV42U8W	✓	✓	✓	✓		✓		✓	✓	
TDN19SRV42U12L	✓	✓	✓	✓		✓		✓	✓	
TDN19SRV42U12W	✓	✓	✓	✓		✓		✓	✓	

19" Accessories

19" Fixed Tray For 1000mm Depth Rack

• 1U - (H)35x(W)x495x(D)750



Reference	Color	Dimensions HxWxD
TDN19TRAY110BL		1U - (H)35x(W)x495x(D)750
TDN19TRAY110W		

19" Fixed Tray For 800mm Depth Rack

• 1U - (H)45x(W)x465x(D)450



Reference	Color	Dimensions HxWxD
TDN19TRAY180BL		1U - (H)45x(W)x465x(D)450
TDN19TRAY180W		

19" Telescopic Tray For 750mm Depth Rack

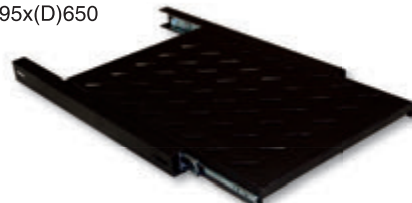
• 1U x 500 x 750 (HxWxD)



Reference	Color	Dimensions HxWxD
TDN19TRAY175BL		1U - (H)50x(W)x495x(D)750
TDN19TRAY175W		

19" Telescopic Tray For 650mm Depth Rack

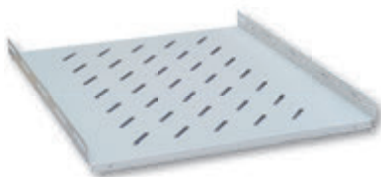
• 1U - (H)50x(W)495x(D)650



Reference	Color	Dimensions HxWxD
TDN19TRAY165BL		1U - (H)50x(W)495x(D)650
TDN19TRAY165W		

19" Fixed Tray For 400mm Depth Rack

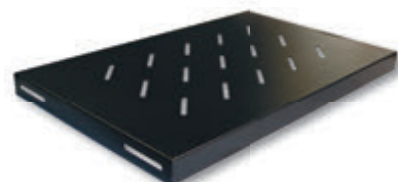
• 1U - (H)45x(W)465x(D)400



Reference	Color	Dimensions HxWxD
TDN19TRAY140BL		1U - (H)45x(W)465x(D)400
TDN19TRAY140W		

19" Fixed Tray For 350mm Depth Rack

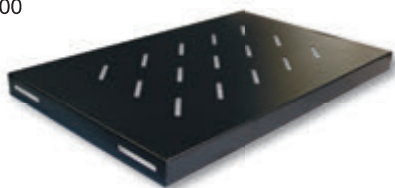
• 1U x 500 x 350 (HxWxD)



Reference	Color	Dimensions HxWxD
TDN19TRAY160BL		1U - (H)50x(W)495x(D)350
TDN19TRAY160W		

19" Fixed Tray For 300mm Depth Rack

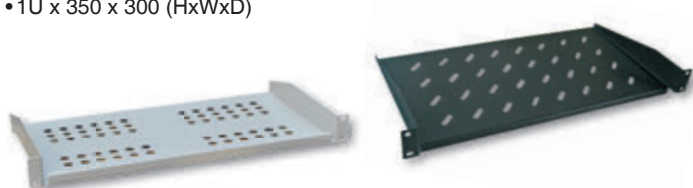
• 1U - (H)30x(W)465x(D)300



Reference	Color	Dimensions HxWxD
TDN19TRAY130BL		1U - (H)30x(W)465x(D)300
TDN19TRAY130W		

19" Fixed Tray

• 1U x 350 x 300 (HxWxD)



Reference	Color	Dimensions HxWxD
TDN19TRAY1-BL		1U - (H)44x(W)350x(D)300
TDN19TRAY1W		

19" Universal Tray

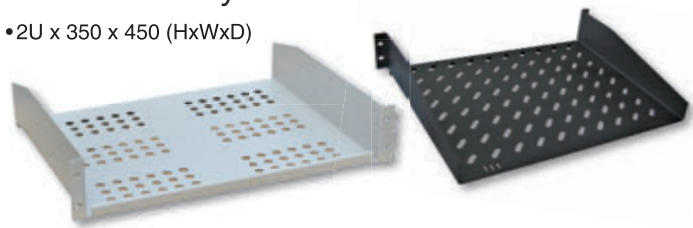
• 1U x 450 x 750 ↔ 45 (HxWxD)



Reference	Color	Dimensions HxWxD
TDN19TRAYUNI		1U - 45x450x750
TDN19TRAYUNIW		

19" Fixed Tray

• 2U x 350 x 450 (HxWxD)



Reference	Color	Dimensions HxWxD
TDN19TRAY2-BL		1U - (H)88x(W)350x(D)450
TDN19TRAY2W		

19" Accessories Compatibility

Tray Compatibility for all 19" Profile Rack 600x600

Reference / Tray	TDN19TRAYUNI	TDN19TRAY1-BL	TDN19TRAY2-BL	TDN19TRAY110BL	TDN19TRAY130BL	TDN19TRAY140BL	TDN19TRAY160BL	TDN19TRAY165BL	TDN19TRAY175BL	TDN19TRAY180BL
	TDN19TRAYUNI-W	TDN19TRAY1-W	TDN19TRAY2-W	TDN19TRAY110-W	TDN19TRAY130-W	TDN19TRAY140-W	TDN19TRAY160-W	TDN19TRAY165-W	TDN19TRAY175-W	TDN19TRAY180-W
TDN1907U66-BL	✓	✓	✓			✓	✓			
TDN1907U66-W	✓	✓	✓			✓	✓			
TDN1909U66-BL	✓	✓	✓			✓	✓			
TDN1909U66-W	✓	✓	✓			✓	✓			
TDN1912U66-BL	✓	✓	✓			✓	✓			
TDN1912U66-W	✓	✓	✓			✓	✓			

Tray Compatibility for all 19" Profile Rack 600x650

Reference / Tray	TDN19TRAYUNI	TDN19TRAY1-BL	TDN19TRAY2-BL	TDN19TRAY110BL	TDN19TRAY130BL	TDN19TRAY140BL	TDN19TRAY160BL	TDN19TRAY165BL	TDN19TRAY175BL	TDN19TRAY180BL
	TDN19TRAYUNI-W	TDN19TRAY1-W	TDN19TRAY2-W	TDN19TRAY110-W	TDN19TRAY130-W	TDN19TRAY140-W	TDN19TRAY160-W	TDN19TRAY165-W	TDN19TRAY175-W	TDN19TRAY180-W
TDN1916U66-BL	✓	✓	✓			✓	✓			
TDN1916U66-W	✓	✓	✓			✓	✓			
TDN1922U66-BL	✓	✓	✓			✓	✓			
TDN1922U66-W	✓	✓	✓			✓	✓			
TDN1932U66-BL	✓	✓	✓			✓	✓			
TDN1932U66-W	✓	✓	✓			✓	✓			
TDN1942U66-BL	✓	✓	✓			✓	✓			
TDN1942U66-W	✓	✓	✓			✓	✓			

Tray Compatibility for all 19" Profile Rack 600x800

Reference / Tray	TDN19TRAYUNI	TDN19TRAY1-BL	TDN19TRAY2-BL	TDN19TRAY110BL	TDN19TRAY130BL	TDN19TRAY140BL	TDN19TRAY160BL	TDN19TRAY165BL	TDN19TRAY175BL	TDN19TRAY180BL
	TDN19TRAYUNI-W	TDN19TRAY1-W	TDN19TRAY2-W	TDN19TRAY110-W	TDN19TRAY130-W	TDN19TRAY140-W	TDN19TRAY160-W	TDN19TRAY165-W	TDN19TRAY175-W	TDN19TRAY180-W
TDN1916U68-BL	✓	✓	✓			✓		✓		✓
TDN1916U68-W	✓	✓	✓			✓		✓		✓
TDN1922U68-BL	✓	✓	✓			✓		✓		✓
TDN1922U68-W	✓	✓	✓			✓		✓		✓
TDN1926U68-BL	✓	✓	✓			✓		✓		✓
TDN1926U68-W	✓	✓	✓			✓		✓		✓
TDN1932U68-BL	✓	✓	✓			✓		✓		✓
TDN1932U68-W	✓	✓	✓			✓		✓		✓
TDN1942U68-BL	✓	✓	✓			✓		✓		✓
TDN1942U68-W	✓	✓	✓			✓		✓		✓
TDN1947U68-BL	✓	✓	✓			✓		✓		✓
TDN1947U68-W	✓	✓	✓			✓		✓		✓

Tray Compatibility for all 19" Profile Rack 800x800

Reference / Tray	TDN19TRAYUNI	TDN19TRAY1-BL	TDN19TRAY2-BL	TDN19TRAY110BL	TDN19TRAY130BL	TDN19TRAY140BL	TDN19TRAY160BL	TDN19TRAY165BL	TDN19TRAY175BL	TDN19TRAY180BL
	TDN19TRAYUNI-W	TDN19TRAY1-W	TDN19TRAY2-W	TDN19TRAY110-W	TDN19TRAY130-W	TDN19TRAY140-W	TDN19TRAY160-W	TDN19TRAY165-W	TDN19TRAY175-W	TDN19TRAY180-W
TDN1932U88-BL	✓	✓	✓			✓		✓		✓
TDN1932U88-W	✓	✓	✓			✓		✓		✓
TDN1942U88-BL	✓	✓	✓			✓		✓		✓
TDN1942U88-W	✓	✓	✓			✓		✓		✓

Tray Compatibility for all 19" Profile Rack 600x1000

Reference / Tray	TDN19TRAYUNI	TDN19TRAY1-BL	TDN19TRAY2-BL	TDN19TRAY110BL	TDN19TRAY130BL	TDN19TRAY140BL	TDN19TRAY160BL	TDN19TRAY165BL	TDN19TRAY175BL	TDN19TRAY180BL
	TDN19TRAYUNI-W	TDN19TRAY1-W	TDN19TRAY2-W	TDN19TRAY110-W	TDN19TRAY130-W	TDN19TRAY140-W	TDN19TRAY160-W	TDN19TRAY165-W	TDN19TRAY175-W	TDN19TRAY180-W
TDN1926U610-BL	✓	✓	✓	✓		✓		✓	✓	
TDN1926U610-W	✓	✓	✓	✓		✓		✓	✓	
TDN1936U610-BL	✓	✓	✓	✓		✓		✓	✓	
TDN1936U610-W	✓	✓	✓	✓		✓		✓	✓	
TDN1942U610-BL	✓	✓	✓	✓		✓		✓	✓	
TDN1942U610-W	✓	✓	✓	✓		✓		✓	✓	

19" Accessories

19" Cooling Unit + Thermostat

- Fan ONLY for Wallmount 19" Rack
- For installation into top-floor module
- 2 Fans - 276m³ Air circulation per hour
- Noise level: 47dBm
- Thermostat adjustable from 0 - 35°C
- 50 x 425 x 565 (HxWxD)



19" Cooling Unit + Thermostat	
TDN19FAN2WMTBL	TDN19FAN2WMTBW

19" Cooling Unit + Thermostat

- For installation into top-floor module
- 4 Fans - 552m³ Air circulation per hour
- Noise level: 47dBm
- Thermostat adjustable from 0 - 35°C
- zz x zz x zz (HxWxD)



19" Cooling Unit + Thermostat	
TDN19FAN2HO-BL	TDN19FAN2HOW
TDN19FAN4HO-BL	TDN19FAN4HOW

19" Cooling Unit + Thermostat

- For installation into top-floor module
- 6 Fans - 1170m³ Air circulation per hour
- Noise level: 47dBm
- Thermostat adjustable from 0 - 35°C
- 50 x 530 x 710 (HxWxD)



19" Cooling Unit + Thermostat	
TDN19FAN6-BL	TDN19FAN6-BL

19" Cooling Unit + Thermostat

- For installation into top-floor module
- 4 Fans - 552m³ Air circulation per hour
- Noise level: 47dBm
- Thermostat adjustable from 0 - 35°C
- 50 x 730 x 720 (HxWxD)



19" Cooling Unit + Thermostat	
TDN19FAN488BL	TDN19FAN488W

19" Cooling Unit + Thermostat

- For installation into top-floor module
- 4 Fans - 552m³ Air circulation per hour
- Noise level: 47dBm
- Thermostat adjustable from 0 - 35°C
- 50 x 530 x 720 (HxWxD)



19" Cooling Unit + Thermostat	
TDN19FAN468BL	TDN19FAN468BL

19" Cooling Unit + Thermostat

- For installation into top-floor module
- 4 Fans - 552m³ Air circulation per hour
- Noise level: 47dBm
- Thermostat adjustable from 0 - 35°C
- 50 x 510 x 530 (HxWxD)



19" Cooling Unit + Thermostat	
TDN19FAN466BL	TDN19FAN466W

19" Cooling Unit + Thermostat

- For installation into top-floor module
- 6 Fans - 1170m³ Air circulation per hour
- Noise level: 47dBm
- Thermostat adjustable from 0 - 35°C
- 50 x 530 x 720 (HxWxD)



19" Cooling Unit + Thermostat	
TDN19FAN668BL	TDN19FAN668W

19" Serverline Cooling Unit

- For installation into top-floor module
- 4 Fans - 552m³ Air circulation per hour
- Noise level: 47dBm
- Thermostat adjustable from 0 - 35°C
- 50 x 450 x 750 (HxWxD)



19" Cooling Unit + Thermostat	
TDN19FAN4610BL	TDN19FAN4610W

19" Serverline Cooling Unit

- For installation into top-floor module
- 4 Fans - 552m³ Air circulation per hour
- Noise level: 47dBm
- Thermostat adjustable from 0 - 35°C
- 50 x 530 x 915 (HxWxD)



19" Cooling Unit + Thermostat	
TDN19FAN46012L	TDN19FAN46012W

Fan Compatibility 600x600 19" Cabinet

Reference / Tray	TDN19FAN466BL
TDN1907U66-BL	✓
TDN1907U66W	✓
TDN1909U66-BL	✓
TDN1909U66W	✓
TDN1912U66-BL	✓
TDN1912U66W	✓

800x800 19" Cabinet

Reference / Tray	TDN19FAN488BL
TDN1932U88-BL	✓
TDN1932U88W	✓
TDN1942U88-BL	✓
TDN1942U88W	✓

Fan Compatibility 800x600 19" Cabinet

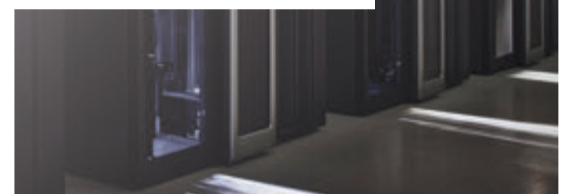
Reference / Tray	TDN19FAN468BL	TDN19FAN668BL
TDN1916U68-BL	✓	✓
TDN1916U68W	✓	✓
TDN1922U68-BL	✓	✓
TDN1922U68W	✓	✓
TDN1926U68-BL	✓	✓
TDN1926U68W	✓	✓
TDN1932U68-BL	✓	✓
TDN1932U68W	✓	✓
TDN1942U68-BL	✓	✓
TDN1942U68W	✓	✓
TDN1947U68-BL	✓	✓
TDN1947U68W	✓	✓

Fan Compatibility 600x1000 19" Cabinet

Reference / Tray	TDN19FAN4610BL
TDN1926U610-BL	✓
TDN1936U610-BL	✓
TDN1942U610-BL	✓

Fan Compatibility 800x1200 19" Cabinet

Reference / Tray	TDN19FAN8012BL
TDN19SRV42U12L	✓
TDN19SRV47U12L	✓

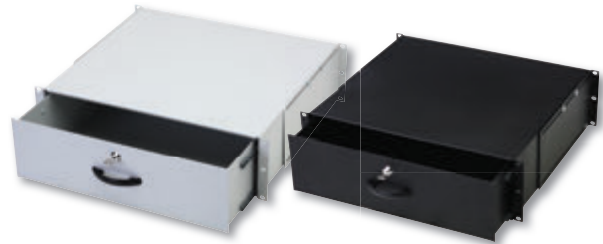


19" Lockable Drawer 1U



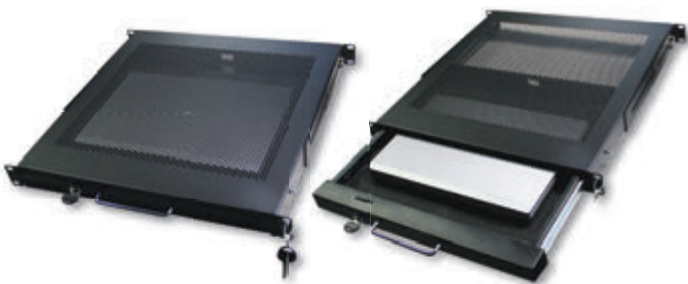
Reference	Color	Unit
TDN19KEY1U-BL	Black	1U
TDN19KEY1UW	White	

19" Lockable Drawer 2U - 3U



Reference	Color	Unit
TDN19KEY2U-BL	Black	2U
TDN19KEY2UW	White	
TDN19KEY3U-BL	Black	3U
TDN19KEY3UW	White	

19" Notebook Lockable Drawer 1U



Reference	Color	Unit
TDN19KEYLT-BL	Black	1U
TDN19KEYLTW	White	

19" Blank Panel 3U



Reference	Color	Unit
TDN19BPD03-BL	Black	3U
TDN19BPD03W	White	

19" Blank Panel 1U



Reference	Color	Unit
TDN19BPN01-BL	Black	1U
TDN19BPN01W	White	

19" Blank Panel 4U



Reference	Color	Unit
TDN19BPD04-BL	Black	4U
TDN19BPD04W	White	

19" Blank Panel 2U



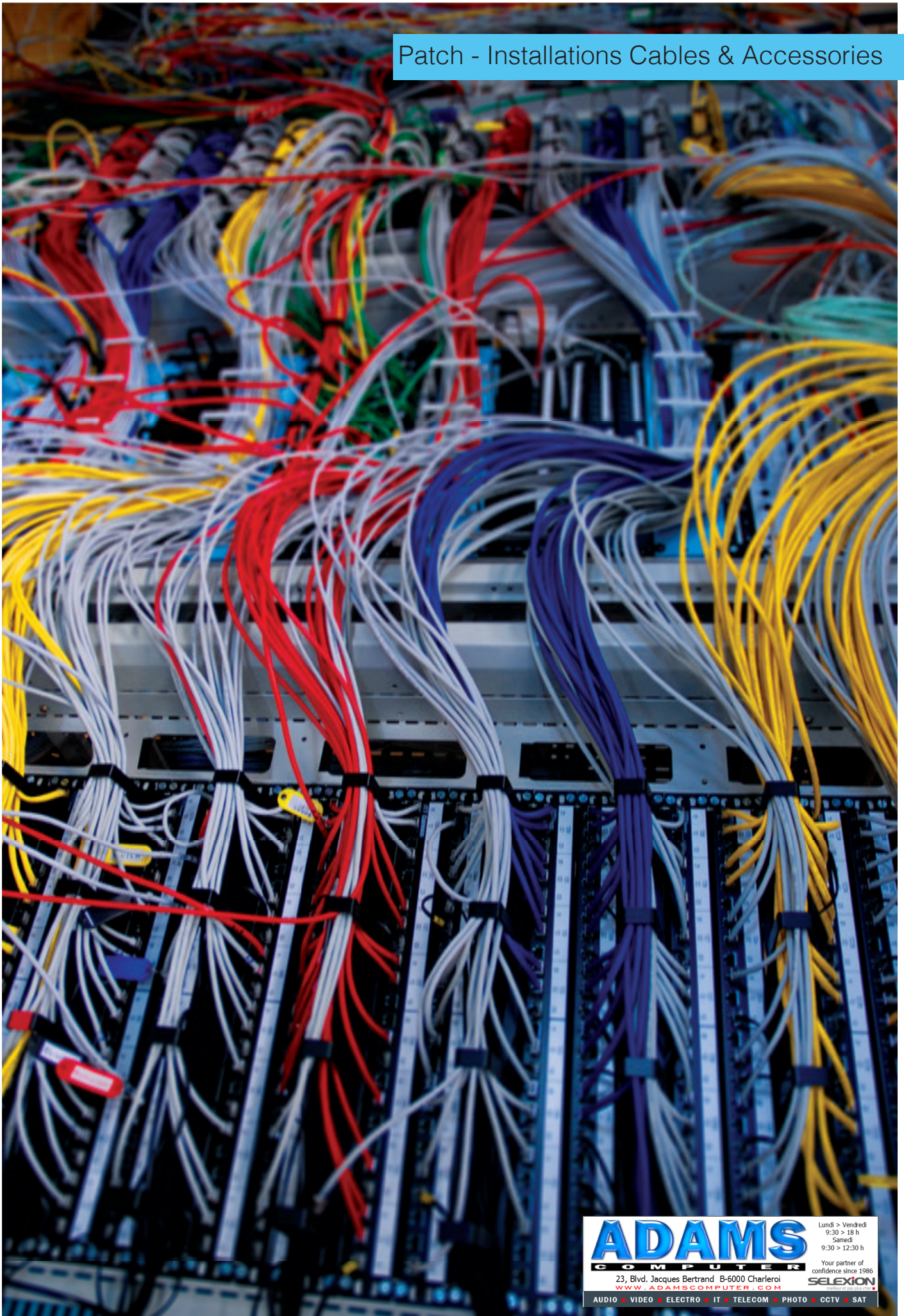
Reference	Color	Unit
TDN19BPN02-BL	Black	2U
TDN19BPN02W	White	

19" Screw Kit



Reference	Type	Pcs
TDN19SET		50x
TDN19SET1	Easy Clips	20x

Patch - Installations Cables & Accessories



ADAMS
COMPUTER

23, Blvd. Jacques Bertrand B-6000 Charleroi
WWW.ADAMSCOMPUTER.COM

Lundi > Vendredi
9:30 > 18 h
Samedi
9:30 > 12:30 h

Your partner of
confidence since 1986
SELEXION
Member of the ADAM group

AUDIO • VIDEO • ELECTRO • IT • TELECOM • PHOTO • CCTV • SAT

UTP Patch Cable - Cat.5e

- Unshielded Cat.5e patch cable
- 4 x 2 AWG 26/7, twisted pair, 100 Ohm
- 2 x RJ45 Connector
- Boot with kink protection and strain relief

- Spot length on boot
- 3P Cat.5e certified



Color Length	Ivory	Red	Blue	Black	Green	White	Yellow	Orange
0,3 M	TCU55U003I	TCU55U003R						
0,5 M	TCU55U005I	TCU55U005R	TCU55U005B	TCU55U005BL	TCU55U005G	TCU55U005W	TCU55U005Y	
1 M	TCU55U010I	TCU55U010R	TCU55U010B	TCU55U010BL	TCU55U010G	TCU55U010W	TCU55U010Y	TCU55U010O
1,5 M	TCU55U015I	TCU55U015R	TCU55U015B	TCU55U015BL	TCU55U015G	TCU55U015W	TCU55U015Y	TCU55U015O
2 M	TCU55U020I	TCU55U020R	TCU55U020B	TCU55U020BL	TCU55U020G	TCU55U020W	TCU55U020Y	TCU55U020O
3 M	TCU55U030I	TCU55U030R	TCU55U030B	TCU55U030BL	TCU55U030G	TCU55U030W	TCU55U030Y	TCU55U030O
5 M	TCU55U050I	TCU55U050R	TCU55U050B	TCU55U050BL	TCU55U050G	TCU55U050W	TCU55U050Y	TCU55U050O
7,5 M	TCU55U075I	TCU55U075R	TCU55U075B	TCU55U075BL	TCU55U075G	TCU55U075W	TCU55U075Y	
10 M	TCU55U100I	TCU55U100R	TCU55U100B	TCU55U100BL	TCU55U100G	TCU55U100W	TCU55U100Y	
15 M	TCU55U150I	TCU55U150R	TCU55U150B	TCU55U150BL	TCU55U150G	TCU55U150W	TCU55U150Y	
20 M	TCU55U200I	TCU55U200R	TCU55U200B	TCU55U200BL	TCU55U200G	TCU55U200W	TCU55U200Y	
25 M	TCU55U250I							
30 M	TCU55U300I	TCU55U300R	TCU55U300B	TCU55U300BL	TCU55U300G	TCU55U300W	TCU55U300Y	
50 M	TCU55U500I	TCU55U500R				TCU55U500W		
100 M	TCU55U1000I							

UTP

Een UTP-kabel bestaat uit paren geïsoleerde koperen kabels. Hij wordt meestal gebruikt voor lokale netwerken en telefoonaansluitingen. De snelheid van de gegevensoverdracht ligt lager dan bij een coax kabel of optische fiber maar hij is goedkoper en makkelijker om mee te werken.

Un câble UTP est conçu de câble en cuivre isolé dans une gaine unique. Il est généralement utilisé dans un réseau local et dans une connexion téléphonique. Il n'est pas aussi solide et rapide qu'un câble coax ou d'une fibre optique, mais c'est un câble bon marché est facile à manipuler.



UTP Patch Cable - Cat.6

- Unshielded Cat.6 patch cable
- 4 x 2 AWG 26/7, twisted pair, 100 Ohm
- 2 x RJ45 Connector
- Boot with kink protection and strain relief

- Spot length on boot
- 3P Cat.6 certified



Color Length	Ivory	Red	Blue	Black	Green	White	Yellow	Orange
0,15 M	TCU66U0015I	TCU66U0015R	TCU66U0015B	TCU66U0015BL	TCU66U0015G	TCU66U0015W	TCU66U0015Y	TCU66U0015O
0,3 M	TCU66U003I	TCU66U003R	TCU66U003B	TCU66U003BL	TCU66U003G	TCU66U003W	TCU66U003Y	TCU66U003O
0,5 M	TCU66U005I	TCU66U005R	TCU66U005B	TCU66U005BL	TCU66U005G	TCU66U005W	TCU66U005Y	
1 M	TCU66U010I	TCU66U010R	TCU66U010B	TCU66U010BL	TCU66U010G	TCU66U010W	TCU66U010Y	TCU66U010O
1,5 M	TCU66U015I	TCU66U015R	TCU66U015B	TCU66U015BL	TCU66U015G	TCU66U015W	TCU66U015Y	TCU66U015O
2 M	TCU66U020I	TCU66U020R	TCU66U020B	TCU66U020BL	TCU66U020G	TCU66U020W	TCU66U020Y	TCU66U020O
3 M	TCU66U030I	TCU66U030R	TCU66U030B	TCU66U030BL	TCU66U030G	TCU66U030W	TCU66U030Y	TCU66U030O
5 M	TCU66U050I	TCU66U050R	TCU66U050B	TCU66U050BL	TCU66U050G	TCU66U050W	TCU66U050Y	TCU66U050O
7 M	TCU66U070I	TCU66U070R	TCU66U070B	TCU66U070BL	TCU66U070G	TCU66U070W	TCU66U070Y	TCU66U070O
10 M	TCU66U100I	TCU66U100R	TCU66U100B	TCU66U100BL	TCU66U100G	TCU66U100W	TCU66U100Y	TCU66U100O
15 M	TCU66U150I	TCU66U150R	TCU66U150B	TCU66U150BL	TCU66U150G	TCU66U150W	TCU66U150Y	TCU66U150O
20 M	TCU66U200I	TCU66U200R	TCU66U200B	TCU66U200BL	TCU66U200G		TCU66U200Y	
25 M	TCU66U250I							
30 M	TCU66U300I		TCU66U300B	TCU66U300BL	TCU66U300G		TCU66U300Y	

Patch Cables

FTP Patch Cable - Cat.5e

- Foil shielded Cat.5e patch cable
- 4 x 2 AWG 26/7, twisted pair, 100 ohm
- 2 x RJ45 shielded connectors
- Conform with EIA / TIA 568
- PVC sheath
- In individual package

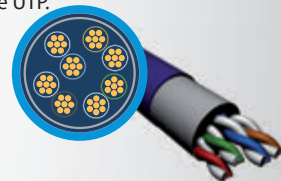


Color	Ivory	Red	Blue	Black	Green	Violet	Yellow	Orange	Pink
Length									
0,15 m	TCR55SS0015I	TCR55SS0015R	TCR55SS0015B	TCR55SS0015BL	TCR55SS0015G	TCR55SS0015V	TCR55SS0015Y	TCR55SS0015O	
0,25 m	TCR55SS0025I								
0,3 m		TCR55SS003R							
0,5 m	TCR55SS005I	TCR55SS005R	TCR55SS005B		TCR55SS005G	TCR55SS005V	TCR55SS005Y		TCR55SS005P
1 m	TCR55SS010I	TCR55SS010R	TCR55SS010B	TCR55SS010BL	TCR55SS010G	TCR55SS010V	TCR55SS010Y		TCR55SS010P
1,5 m	TCR55SS015I	TCR55SS015R	TCR55SS015B		TCR55SS015G	TCR55SS015V	TCR55SS015Y		
2 m	TCR55SS020I	TCR55SS020R	TCR55SS020B	TCR55SS020BL	TCR55SS020G	TCR55SS020V	TCR55SS020Y		TCR55SS020P
3 m	TCR55SS030I	TCR55SS030R	TCR55SS030B	TCR55SS030BL	TCR55SS030G	TCR55SS030V	TCR55SS030Y		TCR55SS030P
5 m	TCR55SS050I	TCR55SS050R	TCR55SS050B	TCR55SS050BL	TCR55SS050G	TCR55SS050V	TCR55SS050Y		TCR55SS050P
7,5 m	TCR55SS075I	TCR55SS075R	TCR55SS075B		TCR55SS075G		TCR55SS075Y		
10 m	TCR55SS100I	TCR55SS100R	TCR55SS100B		TCR55SS100G		TCR55SS100Y		
15 m	TCR55SS150I	TCR55SS150R	TCR55SS150B		TCR55SS150G		TCR55SS150Y		
20 m	TCR55SS200I	TCR55SS200R	TCR55SS200B						
30 m	TCR55SS300I			TCR55SS300BL					
50 m	TCR55SS500I								

FTP

FTP "Foiled twisted pair", is een paar van gevlochten kabels gewikkeld in een aluminium blad. FTP is meer resistent en sterker dan de UTP. FTP wordt meestal gebruikt in omgevingen met veel elektromagnetische storingen.

FTP désigne "Foiled twisted pair", c'est à dire paire de cable tressés enroulé d'une feuille d'aluminium.
Le cable FTP est plus résistant et solide que le UTP.
Il souvent est utilisé dans des environnements ou il y a beaucoup d'interference électromagnétique.



SSTP/PIMF Patch Cable - Cat.6

- Pairs with foil and full braid shilding (PIMF)
- 4 x 2 AWG 26/7, twisted pair, 100 ohm
- 2 x RJ45 shielded connectors
- Conform with EIA / TIA 568
- PVC sheath
- In individual package



Color	Ivory	Red	Blue	Black	Green	Violet	White	Yellow	Orange
Length									
0,15 m	TCR66SS0015I	TCR66SS0015R	TCR66SS0015B	TCR66SS0015BL	TCR66SS0015G			TCR66SS0015Y	
0,3 m	TCR66SS003I								
0,5 m	TCR66SS005I	TCR66SS005R	TCR66SS005B		TCR66SS005G	TCR66SS005V	TCR66SS005WH*	TCR66SS005Y	TCR66SS005O*
1 m	TCR66SS010I	TCR66SS010R	TCR66SS010B	TCR66SS010BL	TCR66SS010G			TCR66SS010Y	TCR66SS010O*
1,5 m	TCR66SS015I	TCR66SS015R		TCR66SS015BL	TCR66SS015G			TCR66SS015Y	TCR66SS015O*
2 m	TCR66SS020I	TCR66SS020R	TCR66SS020B	TCR66SS020BL	TCR66SS020G	TCR66SS020V	TCR66SS020WH	TCR66SS020Y	TCR66SS020O*
3 m	TCR66SS030I	TCR66SS030R	TCR66SS030B	TCR66SS030BL	TCR66SS030G		TCR66SS030WH	TCR66SS030Y	TCR66SS030O*
5 m	TCR66SS050I	TCR66SS050R	TCR66SS050B	TCR66SS050BL	TCR66SS050G		TCR66SS050WH	TCR66SS050Y	TCR66SS050O*
7 m	TCR66SS070I	TCR66SS070R	TCR66SS070B		TCR66SS070G			TCR66SS070Y	
10 m	TCR66SS100I	TCR66SS100R	TCR66SS100B		TCR66SS100G	TCR66SS100V	TCR66SS100WH	TCR66SS100Y	
15 m	TCR66SS150I	TCR66SS150R	TCR66SS150B		TCR66SS150G		TCR66SS150WH	TCR66SS150Y	
20 m	TCR66SS200I	TCR66SS200R	TCR66SS200B	TCR66SS200BL	TCR66SS200G		TCR66SS200WH	TCR66SS200Y	
30 m	TCR66SS300I	TCR66SS300R	TCR66SS300B	TCR66SS300BL			TCR66SS300WH	TCR66SS300Y	

SSTP/PIMF LSOH Patch Cable - Cat.6

- 500 Mhz
- 4 x 2 AWG 26/7, twisted pair, 100 Ohm
- Spot length on boot - 3P Cat. 6a certified
- Spot length on boot

LSOH
Low Smoke zero halogen

3P
THIRD PARTY TESTING

Cat 6a

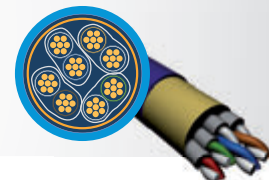


Color	Ivory	Red	Blue	Black	Green	Violet	White	Yellow	Orange
Length									
0,3 m		TCR6ASS003R							
0,5 m	TCR6ASS005I	TCR6ASS005R	TCR6ASS005B	TCR6ASS005BL	TCR6ASS005G	TCR6ASS005V	TCR6ASS005WH	TCR6ASS005Y	TCR6ASS005O
1 m	TCR6ASS010I	TCR6ASS010R	TCR6ASS010B	TCR6ASS010BL	TCR6ASS010G	TCR6ASS010V	TCR6ASS010WH	TCR6ASS010Y	TCR6ASS010O
2 m	TCR6ASS020I	TCR6ASS020R	TCR6ASS020B	TCR6ASS020BL	TCR6ASS020G	TCR6ASS020V	TCR6ASS020WH	TCR6ASS020Y	TCR6ASS020O
3 m	TCR6ASS030I	TCR6ASS030R	TCR6ASS030B	TCR6ASS030BL	TCR6ASS030G	TCR6ASS030V	TCR6ASS030WH	TCR6ASS030Y	TCR6ASS030O
5 m	TCR6ASS050I	TCR6ASS050R	TCR6ASS050B	TCR6ASS050BL	TCR6ASS050G	TCR6ASS050V	TCR6ASS050WH	TCR6ASS050Y	TCR6ASS050O
7 m	TCR6ASS070I								
10 m	TCR6ASS100I	TCR6ASS100R	TCR6ASS100B	TCR6ASS100BL	TCR6ASS100G	TCR6ASS100V	TCR6ASS100WH	TCR6ASS100Y	TCR6ASS100O
15 m	TCR6ASS150I								
20 m	TCR6ASS200I								
25 m	TCR6ASS250I								
30 m	TCR6ASS300I								

SSTP/PIMF

De S/STP en PIMF is gemaakt van gevlochten kabel, gewikkeld in een aluminium blad en heeft een extra bescherming. De gevlochten kabels zijn geïsoleerd voor een maximale bescherming en een minimaal verlies van de gegevensoverdracht.

Le S/STP et PIMF est composé de paire tressé enroulé d'une feuille en aluminium et possède un blindage supplémentaire. Les paires tressées sont isolé individuellement pour une protection maximale et un minimum de pertes de diaphonie.

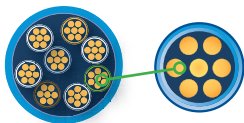


LSZH of LSOH "Low Smoke Halogen" duidt er op dat de gevlochten kabel vervaardigd is uit een thermoplastisch materiaal dat de toxische emissies blokkeert wanneer de kabel blootgesteld is aan hoge temperaturen. De "Low Smoke Halogen" kabel is in polypropyleen ontworpen om de uitstoot van giftige en bijtende gassen bij verbranding te verminderen.

LSZH ou LSOH, c'est à dire "Low Smoke Halogen" est un câble dont la gaine est composé thermoplastic et sert à bloquer les émission toxic quand le câble est exposé à de forte température. Le câble "Low Smoke Halogen" est conçu de polypropylene, qui réduit l'émission de gaz toxic et corrosif durant la combustion.

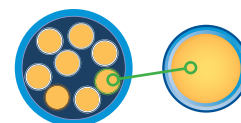
Stranded Cable

- Bij een 'stranded'-kabel bevinden zich meerdere smalle kabels in een isolerend omhulsel. Hij is meer flexibel en ideaal om te gebruiken als Patchkabel.
- Un **câble Stranded** est conçu de plusieurs fils de petit calibre placé dans un machon isolant séparés. Il est plus flexible et convient parfaitement pour concevoir des câbles Patch.



Solid Cable

- In een 'solid'-kabel bevindt zich 1 dikkere kabel in een geïsoleerd omhulsel. Dit geeft een betere elektrische geleiding dan de 'stranded'-kabel en wordt vaak gebruikt als installatiekabel in de muur en in kabelgoten.
- Un **câble Solid** à un calibre plus épais dans le machon isolant. Il a de meilleures performances électriques que le Stranded et est principalement utilisé comme câble d'installation dans les murs et goulottes.



The Directive on the restriction of the use of certain hazardous substances in electrical and electronic equipment, such as:

- Lead (Pb)
- Mercury (Hg)
- Cadmium (Cd)
- Hexavalent chromium (Cr6+)
- Polybrominated biphenyls (PBB)
- Polybrominated diphenyl ether (PBDE)

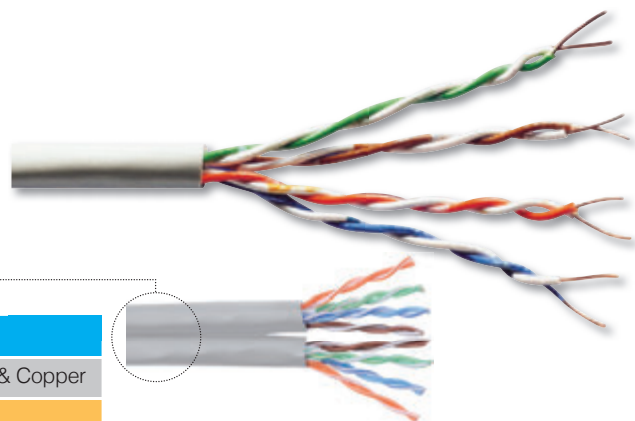
Installations Cables

Cat.5e UTP Solid Unshielded Cable

- Unshielded Cat.5e installation cable
- 4 x 2 AWG 24/1, light PVC
- Impedance: 100±15%
- ETL Verified To EIA/TIA-568-B ROHS
- Meter marking

Duplex Cable

Reference	Length	Categorie	Contents
LBC5UTPSO	100m	Cat.5e	Aluminium & Copper
LBCC5UTPSO	100m	Cat.5e	Copper
LBC5UTP305	305m	Cat.5e	Aluminium & Copper
LBCC5UTP305	305m	Cat.5e	Copper
LBC5UTP500	500m	Cat.5e	Aluminium & Copper
LBCC5UTP500	500m	Cat.5e	Copper
LBC5UTP500D	500m Duplex	Cat.5e	Aluminium & Copper
LBCC5UTP1000	1000m	Cat.5e	Copper

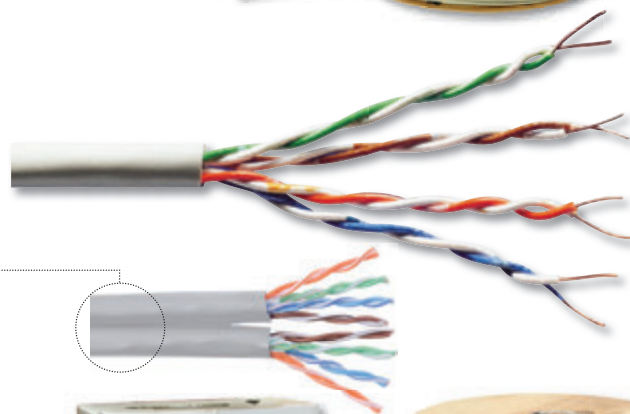


Cat.6 - Cat.6a UTP Solid Unshielded Cable

- Unshielded Cat.6 installation cable
- 4 x 2 AWG 24/1, light PVC
- Impedance: 100±15%
- ETL Verified To EIA/TIA-568-B ROHS
- Meter marking

Duplex Cable

Reference	Length	Categorie	Contents
LBC6UTP305	305m	Cat.6	Aluminium & Copper
LBCC6UTP305	305m	Cat.6	Copper
LBC6UTP500	500m	Cat.6	Aluminium & Copper
LBC6UTP500D	500m Duplex	Cat.6	Aluminium & Copper
LBCC6AUTP305	305m	Cat.6a	Copper



RJ45 Connector Shielded & Unshielded



Reference	Nr.	Category / Type	Guide
TWP8P8CR	1	Cat.5e / Unshielded	No
TWP8P8CR-6	2	Cat.6 / Unshielded	Yes
TWP8P8CRIN	3	Cat.5e / Unshielded	Yes
TWP8P8CRIN-5	4	Cat.5e / Shielded	Yes
TWP8P8CRIN-6	5	Cat.6 / Shielded	Yes
TWP8P8CSRS	6	Cat.5e / Shielded	No
TWP8P8CSRS-6	7	Cat.6 / Shielded	No
TWP8P8SRS6	8	Cat.6 / Shielded + Boot	No

RJ45 Boots Connector

- Kink Protection Sleeves
- For 8P8C modular plugs, yellow
- Suitable for shielded and unshielded
- Modular plugs, not for Hirose



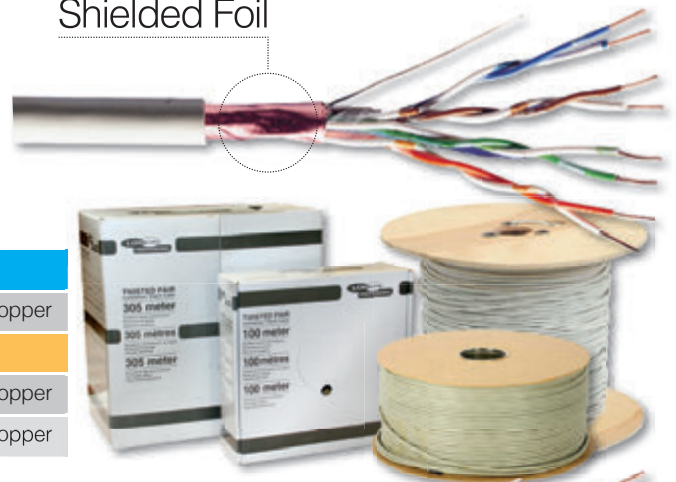
Reference	Color
TWPCBOOTB	Black
TWPCBOOTG	Grey
TWPCBOOTN	Green
TWPCBOOTR	Red
TWPCBOOTU	Blue
TWPCBOOTY	Yellow

Cat.5e FTP Solid Shielded Cable

- Shielded Cat.5e installation cable
- 4x 2 AWG 24/1, light PVC
- Impedance: 100±15%
- ETL Verified To EIA/TIA-568-B ROHS
- Meter marking

Reference	Length	Categorie	Contents
LBC5FTP100	100m	Cat.5e	Aluminium & Copper
LBCC5UTP305	100m	Cat.5e	Copper
LBC5FTP305	305m	Cat.5e	Aluminium & Copper
LBC5FTP500	500m	Cat.5e	Aluminium & Copper

Shielded Foil



Cat.5e FTP Solid Shielded Outdoor Cable

- Shielded Cat.5e outdoor installation cable
- 4x 2 AWG 24/1, light PVC
- Impedance: 100±15%
- ETL Verified To EIA/TIA-568-B ROHS
- Meter marking

Reference	Length	Categorie	Contents
LBC5FTP500OUT	500m	Cat.5e	Aluminium & Copper

Outdoor sheath

Shielded Foil



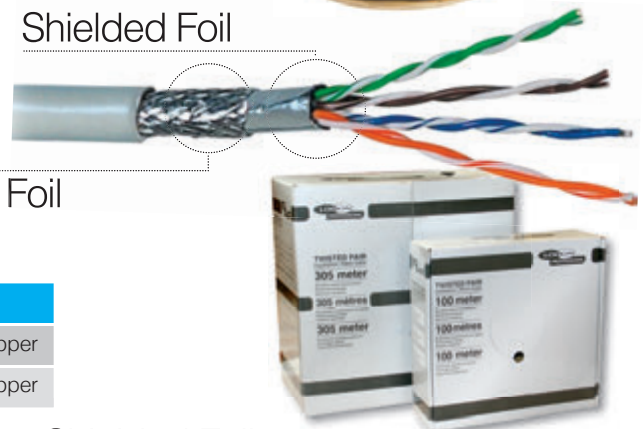
Cat.5e S-FTP Solid Double Shielded Cable

- Double Shielded Cat.5e outdoor installation cable
- 4x 2 AWG 24/1, light PVC
- Impedance: 100±15%
- ETL Verified To EIA/TIA-568-B ROHS
- Meter marking

Reference	Length	Categorie	Contents
LBC5SFTP100	100m	Cat.5e	Aluminium & Copper
LBC5SFTP305	305m	Cat.5e	Aluminium & Copper

Shielded Foil

Double Twisted Foil



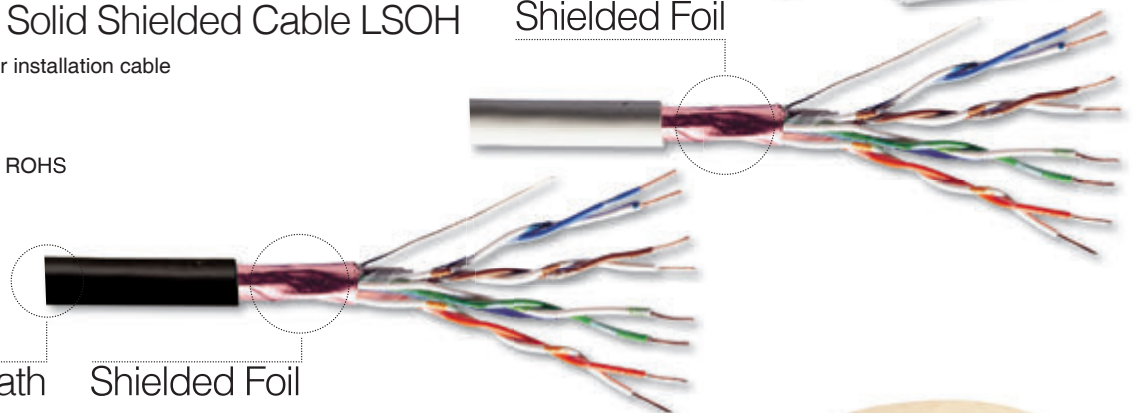
Cat.6 - Cat.6a FTP Solid Shielded Cable LSOH

- Shielded Cat.6 - Cat.6a outdoor installation cable
- 4x 2 AWG 24/1, light PVC
- Impedance: 100±15%
- ETL Verified To EIA/TIA-568-B ROHS
- Meter marking

Shielded Foil

Outdoor sheath

Shielded Foil



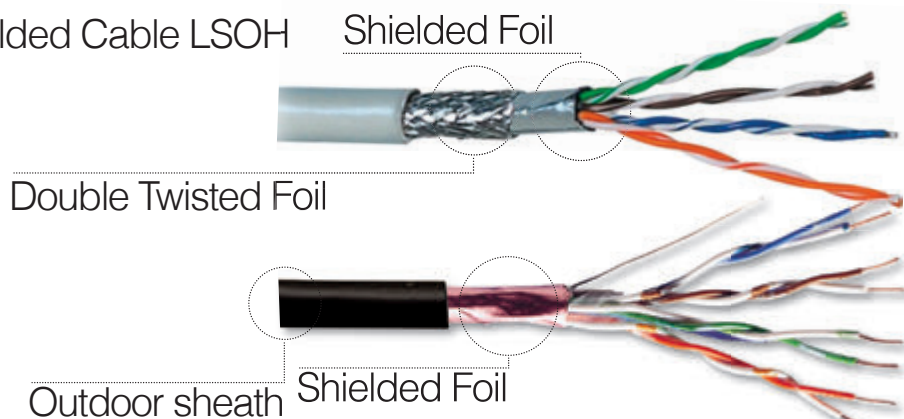
Reference	Length	Categorie	Contents
LBCC6SUTP305SO	305m	Cat.6	Copper
LBCC6SUTP500SO	500m	Cat.6	Copper
LBCC6ASUTP500	500m	Cat.6a	Copper
LBCC6AFTP500OU	500m	Cat.6a	Copper - Outdoor
LBCC6SUTP1000S	1000m	Cat.6	Copper



Installations Cables

Cat.6a S-FTP Solid Double Shielded Cable LSOH

- Double shielded Cat.6a in & outdoor installation cable
- 4x 2 AWG 24/1, light PVC
- Impedance: 100±15%
- ETL Verified To EIA/TIA-568-B ROHS
- Meter marking



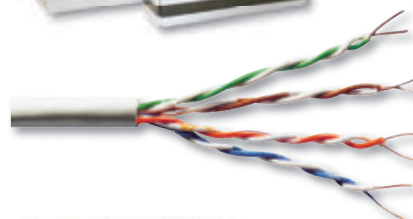
Reference	Length	Categorie	Contents
LBCC6ASFTP500SO	100m	Cat.6a	Copper - Outdoor
LBCC6ASFTP305SO	305m	Cat.6a	Copper
LBCC6ASFTP500SO	500m	Cat.6a	Copper



LSOH
Low Smoke zero halogen

Cat.5e UTP Stranded Unshielded Cable

- Unshielded Cat.5e Stranded installation cable
- 4x 2 AWG 24/1, light PVC
- Impedance: 100±15%
- ETL Verified To EIA/TIA-568-B ROHS
- Meter marking

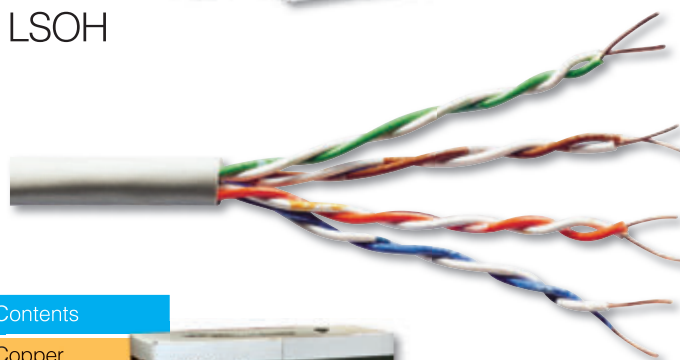


Reference	Length	Categorie	Contents
LBC5UTPST	100m	Cat.5e	Aluminium & Copper
LBC5UTP305ST	305m	Cat.5e	Aluminium & Copper



Cat.6a UTP Stranded Unshielded Cable LSOH

- Unshielded Cat.5e Stranded installation cable
- 4x 2 AWG 24/1, light PVC
- Impedance: 100±15%
- ETL Verified To EIA/TIA-568-B ROHS
- Meter marking



Reference	Length	Color	Categorie	Contents
LBCC6AUPST	100m		Cat.6a	Copper
LBCC6AUPST-B	100m		Cat.6a	Copper
LBCC6AUPST-BL	100m		Cat.6a	Copper
LBCC6AUPST-G	100m		Cat.6a	Copper
LBCC6AUPST-R	100m		Cat.6a	Copper
LBCC6AUPST-Y	100m		Cat.6a	Copper

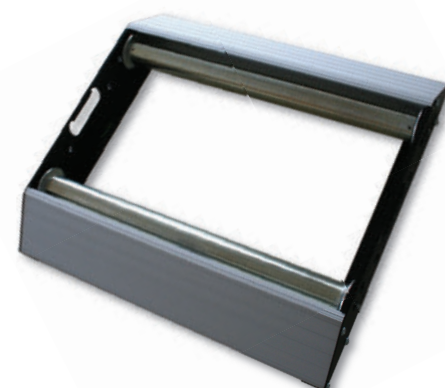


LSOH
Low Smoke zero halogen

Cable Drum Roller - Max 175kg

- The new cable splicers are designed for intensive daily use
- The front and back are made of aluminum profiles with anti-slip grooves, the sides are made of galvanized powder coated steel

Reference	Max. weight	Max. drum	Max. drum
LBCROLLER	175kg	1200mm	560mm



8 Port Cat.5e Shielded

- ISO/IEC 11801 and EN 50173
- Cable installation via LSA strips, color codes based on EIA/TIA 568 A & B
- 8 x shielded RJ45 sockets
- Clamp strain relief
- Central ground

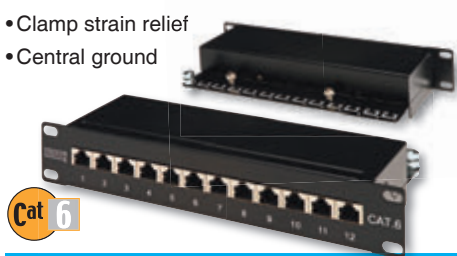


8 Port Cat.5e Shielded

DN10001

12 Port Cat.6 Shielded

- ISO/IEC 11801 and EN 50173
- Cable installation via LSA strips, color codes based on EIA/TIA 568 A & B
- 12 x shielded RJ45 sockets
- Clamp strain relief
- Central ground



12 Port Cat.6 Shielded

DN91612S

12 Port Cat.5e Unshielded

- Housing 1.5 mm thickness aluminium
- IDC PC UL 94V-0, Accept 22-26 AWG Solid Cable
- PCB: FR-4 1.6mm thickness, 2 layer
- Contact: 0.45 mm Phosphor Bronze with 50u" Gold Plating on contact area
- According to UL 1863



12 Port Cat.5e Unshielded

TPP12RU

24 Port Cat.5e Unshielded

- ISO/IEC 11801 and EN 50173
- Cable installation via LSA strips, color codes based on EIA/TIA 568 A & B



24 Port Cat.5e Unshielded

LPP110

24 Port Cat.6 Unshielded

- ISO/IEC 11801 and EN 50173
- Cable installation via LSA strips, color codes based on EIA/TIA 568 A & B



24 Port Cat.6 Unshielded

LPP105

24 Port Cat.6 Shielded

- ISO/IEC 11801 and EN 50173
- Cable installation via LSA strips, color codes based on EIA/TIA 568 A & B



24 Port Cat.6 Shielded

LPP100

48 Port Cat.5e Unshielded

- ISO/IEC 11801 and EN 50173
- Cable installation via LSA strips, color codes based on EIA/TIA 568 A & B



48 Port Cat.5e Unshielded

TPP48U5B

48 Port Cat.6 Unshielded

- ISO/IEC 11801 and EN 50173
- Cable installation via LSA strips, color codes based on EIA/TIA 568 A & B



48 Port Cat.6 Unshielded

TPP48U6B

24 Port Cat.6 Shielded

- ISO/IEC 11801 and EN 50173
- Cable installation via LSA strips, color codes based on EIA/TIA 568 A & B



24 Port Cat.6 Shielded

TPP24S

Patch Panel Dummy Plug

- RJ45 Dummy Plug
- 100pc/pack



Patch Panel Dummy Plug

TPPDUM01

LSA Punch Tools for LSA Strips

- For Krone Type Insertion Tools



LSA Punch Tools for LSA Strips

THTLSA+

LSA Punch Tools for LSA Strips

- For Krone Type Insertion Tools
- With Sensor



LSA Punch Tools for LSA Strips

THTLSAK

Keystone Adapter

Cat.5e Unshielded Keystone

- Cable installation via LSA strips

Unshielded
TMWRJ40CA



Cat.5e Unshielded Keystone

- Cable installation via LSA strips

Unshielded
DN93502



Cat.6 Unshielded Keystone

- Cable installation via LSA strips

Unshielded
DN93601



Cat.6 Unshielded Keystone

- Cable installation via LSA strips

Unshielded
DN93603



Cat.5e Unshielded Keystone

- Cable installation via LSA strips

Unshielded
LKS225



Cat.6 Unshielded Keystone

- Cable installation via LSA strips

Unshielded
LKS220



Cat.6a Shielded Keystone

- Cable installation via LSA strips
- Toolless

Shielded
LKS230



Cat.6 Unshielded Keystone

- Cable installation via LSA strips
- Toolless

Unshielded
LKS235



Cat.5e Shielded Keystone

- Cable installation via LSA strips

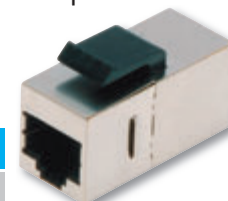
Shielded
TMWRJ45CA



Cat.5e Shielded Keystone Coupler

- 2x RJ45 socket
- Shielded

Shielded
DN93513



Cinch/RCA Ring Keystone Adapter

- Mounting depth: 22.5mm
- 2x cinch male, colour codes



White Ring	Yellow Ring	Red Ring
LKS001	LKS090	LKS005
LKS090	LKS005	LKS085
LKS015	LKS095	

3,5mm Stereo Keystone

- Mounting depth: 22.5mm
- 2x 3.5mm stereo male



3,5mm Stereo
LKS010
LKS100

HDMI Stereo Keystone

- Mounting depth: 23mm
- 2x HDMI type A male



HDMI
LKS030
LKS105

USB 2.0 Keystone Adapter

- Mounting depth: 23mm
- 2x USB 2.0 type A male



USB 2.0 Type A
LKS025
LKS080

USB 2.0 Keystone Adapter

- Mounting depth: 25mm
- Both sided snap in



USB 2.0 Type A - B
LKS020

USB 3.0 Keystone Adapter

- Mounting depth: 32mm
- 2x USB 3.0 type A male



USB 3.0 Type A
LKS075

16 port Keystone Patchpanel

- Standard 19" rack mount size
- 1U

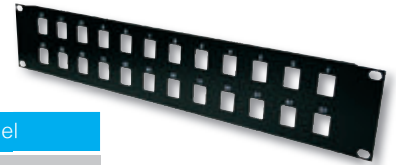


16 port Keystone Patchpanel

TPP16SI

24 port Keystone Patchpanel

- Standard 19" rack mount size
- 2U

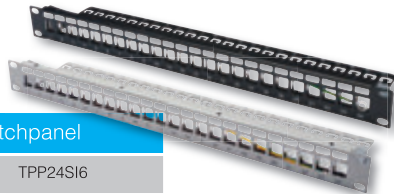


24 port Keystone Patchpanel

TPP24SI

24 port Keystone Patchpanel

- Standard 19" rack mount size
- 1U - Grounded - Shielded



24 port Keystone Patchpanel

TPP24SIB

TPP24SI6

32 port Keystone Patchpanel

- Standard 19" rack mount size
- 3U



32 port Keystone Patchpanel

TPP32SI

1 & 2 port Keystone DIN - Rail

1 port

LKS200

2 port

LKS205



6 & 9 port Keystone DIN - Rail

6 port

LKS210

9 port

LKS215



RJ14 Crimping Tool

- Crimping tool for RJ14 connector
- With Cable Cutter



RJ14 Crimping Tool

TWPHT2094

RJ45 Crimping Tool

- Crimping tool for RJ45 connector - 8P8C
- With Cable Cutter



RJ45 Crimping Tool

TWPHT2100

RJ45 Crimping Tool

- Crimping tool for RJ45 connector - 8P8C
- With Cable Cutter and strip tools

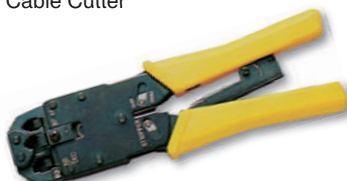


RJ45 Crimping Tool

TWPHT2108

Universal RJ Crimping Tool

- Crimping tool for RJ11-12-45 connector
- With Cable Cutter



Universal RJ Crimping Tool

TWPHT2008R

Universal RJ Crimping Tool

- Crimping tool for RJ11-12-45 connector
- With Cable Cutter



Universal RJ Crimping Tool

TWPHT2009

RJ45 Crimping Tool

- Crimping tool for RJ45 connector - 8P8C
- With Cable Cutter



RJ45 Crimping Tool

TWPHT300

Universal RJ Crimping Tool

- Crimping tool for RJ11- 45 connector
- With Cable Cutter



Universal RJ Crimping Tool

TWPHT2098

Universal Crimping Tool With Cable Tester

- Tests cables for continuity, opens, shorts and swapped wires
- Pin to Pin indication
- Test mode selection for run once or test repeatedly
- Auto Power Saving
- Low power indications
- Suitable for 8P8C(RJ45), 6P6C(RJ12), 6P4C(RJ11)
- Integrated cable stripper and cutter
- Cable tester can be detached from the tool



RJ45 Crimping Tool With Cable Tester

TWPHT2115

Fiber Optic

ADAMS
COMPUTER

23, Blvd. Jacques Bertrand B-6000 Charleroi
WWW.ADAMSCOMPUTER.COM

Lundi > Vendredi
9:30 > 18 h
Samedi
9:30 > 12:30 h

Your partner of
confidence since 1986

SELEXION
member of the ADAM group

AUDIO • VIDEO • ELECTRO • IT • TELECOM • PHOTO • CCTV • SAT

ST

- Straight tip
- Ferrule diameter: 2,5 mm
- Coupling type: Bayonet



SC

- Subscriber Connector
- Ferrule diameter: 2,5 mm
- Coupling type: Snap



LC

- Lucent connector
- Ferrule diameter: 1,25 mm
- Coupling type: Snap



MTRJ

- Mechanical Transfer Registered Jack
- Ferrule diameter: 2,45x4,4 mm
- Coupling type: Snap (duplex)



Glasvezel communicatie

Glasvezel kan worden gebruikt als een medium voor telecommunicatie en netwerken. Het is flexibel en kan gebundeld worden zoals netwerkkabels. Glasvezel is voordeliger bij gegevensoverdrachten over een lange afstand, het licht wordt met minder verlies verspreid in vergelijking met een elektrisch signaal. Inzicht hebben in de verschillende soorten van Glasvezels is inzicht hebben in de verschillende gebruiken wijzen van deze.

Er zijn twee soorten van Glasvezel

De Multimode en de Singlemode. **De Multimode Glasvezel** is gemaakt voor korte afstand en aangepast voor LAN systemen en videobewaking.

De Singlemode Glasvezel is gemaakt voor telefonie over een lange afstand, televisieproductie en het uitzenden hiervan.

Het verschil tussen single mode en multi-mode

Het licht wordt gereflecteerd in een zigzagpatroon in de kern van dikkere multi-mode fiber kabels. Hierdoor wordt een hogere demping, dat wil zeggen, het bereik van het signaal vermindert. Het licht niet zo vaak breken in single mode glasvezel kabels en staat garant voor een enorm bereik.

Mono of Multimode

De connectors worden gebruikt voor een verbinding met koppelaars of converters. Ze zullen geen invloed hebben op het type van signaal, maar zorg er wel steeds voor dat de connector conform is met het type fibre, anders is er een risico dat de connectie niet zal werken.

Communication par Fibre Optic

La Fibre Optique peut-être utilisée comme Médium pour la télécommunication et la mise en réseau. Elle est flexible et peut-être groupé comme un cable réseau. La Fibre Optic est avantageuse pour les communications de longue distance, la lumière se disperse avec peu d'atténuation comparé à un signal électrique. Comprendre les caractéristiques des différentes Fibres Optiques est comprendre les différentes utilisations de celles-ci.

Il y a deux types de Fibres Optiques:

Le multimode et le singlemode. La Fibre Multimode est conçue pour les courtes distances et adapté pour les système LAN et la video surveillance.

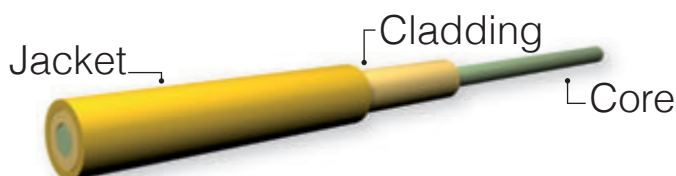
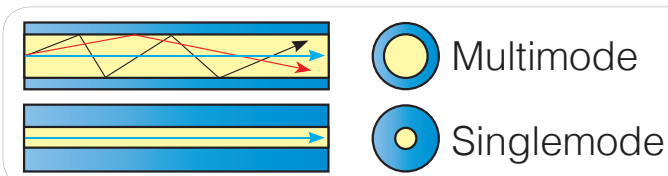
La Fibre Singlemode est conçue pour les longues distances. Adapté pour les communications téléphoniques de longues distances et pour les productions télévision et Broadcast.

Het verschil tussen single mode en multi-mode

Het licht wordt gereflecteerd in een zigzagpatroon in de kern van dikkere multi-mode fiber kabels. Hierdoor wordt een hogere demping, dat wil zeggen, het bereik van het signaal vermindert. Het licht niet zo vaak breken in single mode glasvezel kabels en staat garant voor een enorm bereik.

Mono ou Multimode

Les connecteurs utilisés s'assurent de la connection entre un convertisseur ou coupleur. Ils ne vont pas influencer la nature du signal, mais il faut s'assurer que le connecteur est conforme au modèle de fibre, sinon il y a un risque que la connection ne s'effectue pas.



WAT MOETEN WE ONTHOUDEN:

Wanneer en waarom gebruiken we Glasvezel ?

Het gebruik is aanbevolen wanneer de connectie langer is dan 100m.

Waarom een paar Glasvezel ?

De link is in 2 richtingen tegelijkertijd vervoerd, één vezel verzendt, de andere ontvangt.

De glasvezel die verzendt moet hetzelfde signaal hebben als de ontvanger.

Uw apparatuur kan van verschillende fabrikanten komen. U moet dus éénzelfde signaal gebruiken om problemen te vermijden.
-10FL naar 10FL
-100FX naar 100FX
-1000FX naar 1000FX

Het is onmogelijk om een verbinding te maken tussen 100FX en een 1000FX.

Een Glasvezel kan verschillende connectors hebben aan de 2 uiteinden.

De actieve component mogen verschillenden connecties hebben en op hetzelfde signaal werken. Bijvoorbeeld: SC op een zijde en LC aan de andere kant.

De grondstof is Glasvezel. Het is belangrijk om de kromming van de vezel te respecteren om deze vezel niet te breken.

QUE DEVONS NOUS RETENIR:

Quand et pourquoi on utilise la Fibre Optique ?

L'utilisation est conseillé quand la connection dépasse les 100m

Pourquoi une paire de Fibre ?

La liaison est simultanément transporter dans les 2 directions, une Fibre émet, l'autre reçoit.

La Fibre qui émet doit avoir le même signal que celle qui reçoit.

Vos équipements peuvent venir de différents constructeurs. Il faut donc respecter le type de signal pour ne rencontrer aucun problème.

-10FL vers 10FL
-100FX vers 100FX
-1000SX vers 1000SX

Il est impossible d'avoir une connection entre 100FX et 1000FX

Une Fibre Optique peut avoir différents connecteurs au 2 extrémités.

Les composants actifs peuvent avoir différentes connections et savent fonctionner sur le même signal. Par exemple: SC d'un côté et LC de l'autre côté.

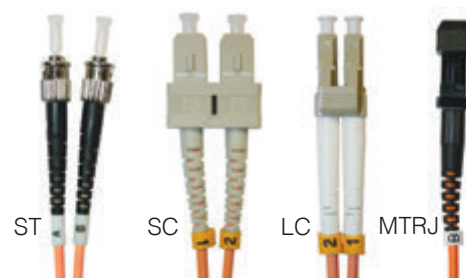
La matière première de la Fibre Optique est la fibre de verre.

Il est important de respecter la courbure d'un faisceau pour ne pas briser la Fibre.

Fiber Optic

Multimode OM1 Duplex 62,5/125 μ Patch Cable

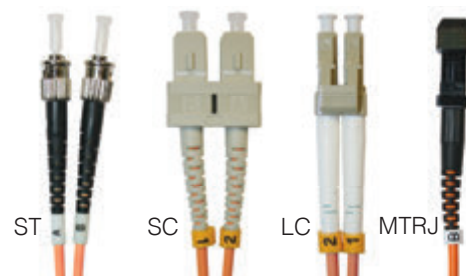
- Up to 1Gbps
- Halogenfree cable 62,5/125 μ fiber
- Up to 1 Gbit Ethernet, fibre class OM 1
- Two color Boot (for Multimode)
- Individually packaged, with test report



	1 m	2 m	5 m	7 M	10 m	15 m	20 m
ST-ST	AL6STST01I	AL6STST02I	AL6STST05I		AL6STST10I	AL6STST15I	
SC-SC	AL6SCSC01I	AL6SCSC02I	AL6SCSC05I		AL6SCSC10I	AL6SCSC15I	
LC-LC	AL6LCLC01I	AL6LCLC02I	AL6LCLC05I		AL6LCLC10I	AL6LCLC15I	
ST-SC	AL6STSC01I	AL6STSC02I	AL6STSC05I		AL6STSC10I		AL6STST20I
LC-SC	AL6LCSC01I	AL6LCSC02I	AL6LCSC05I		AL6LCSC10I		
LC-ST	AL6ACST01I	AL6LCST02I	AL6LCST05I		AL6LCST10I	AL6LCST15I	AL6LCST20I
MTRJ-ST							
MTRJ-SC	AL6MTRJSC01I						
MTRJ-LC							
MTRJ-MTRJ		AL6MTRJMTRJ02I	AL6MTRJMTRJ03I				

Multimode OM2 Duplex 50/125 μ Patch Cable

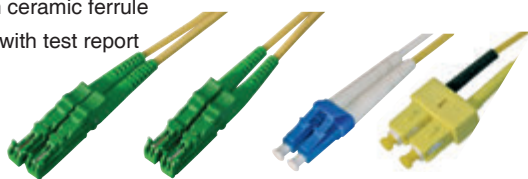
- Up to 1Gbps
- Halogenfree cable 50/125 μ fibre
- Up to 1 Gbit Ethernet, fiber class OM 2
- Two color Boot (for Multimode)
- Single packaged, with test report



	1 m	2 m	3 m	5 m	7 M	10 m	15 m	20 m
ST-ST	AL5STST01I	AL5STST02I	AL5STST03I	AL5STST05I	AL5STST07I	AL5STST10I		
SC-SC	AL5SCSC01I	AL5SCSC02I	AL5SCSC03I	AL5SCSC05I	AL5SCSC07I	AL5SCSC10I		
LC-LC	AL5LCLC01I	AL5LCLC02I	AL5LCLC03I	AL5LCLC05I	AL5LCLC07I	AL5LCLC10I	AL5LCLC15I	AL5LCLC20I
ST-SC	AL5STSC01I	AL5STSC02I	AL5STSC03I	AL5STSC05I	AL5STSC07I	AL5STSC10I		
LC-SC					AL5LCSC07I		AL5LCSC15I	
LC-ST	AL5LCST01I	AL5LCST02I	AL5LCST03I	AL5LCST05I		AL5LCST10I		
MTRJ-ST	AL5MTRJST01I		AL5MTRJST03I					
MTRJ-SC		AL5MTRJSC02I	AL5MTRJSC03I					
MTRJ-LC								
MTRJ-MTRJ	AL5MTRJMTJ01I	AL5MTRJMTRJ02I						

Singlemode Duplex E2000 Patch Cable

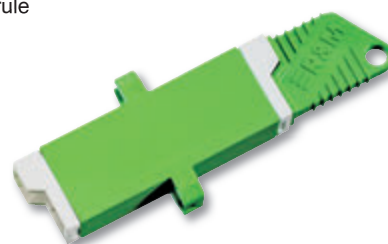
- Singlemode 09/125 μ with 8° APC
- Halogenfree cable I-VH 2E-XXX
- Connector with ceramic ferrule
- Single packed with test report



	1 m	2 m	3 m	5 m
E2000	AL9E20001I	AL9E20002I	AL9E20003I	AL9E20005I
E2000-LC	AL9E2000LC1I	AL9E2000LC2I	AL9E2000LC3I	AL9E2000LC5I
E2000-SC	AL9E2000SC1I	AL9E2000SC2I	AL9E2000SC3I	AL9E2000SC5I

E2000 Coupler 500m Simplex

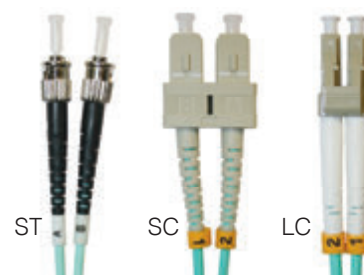
- Singlemode
- Ceramic Ferrule
- Color: Green



500 m
AL9E2000

LC MTRJ Multimode OM3 Duplex 50/125 μ Patch Cable

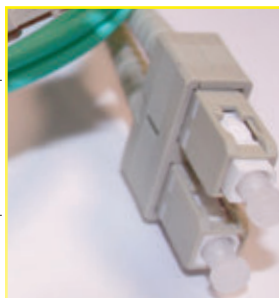
- Up to 10 Gbps
- Class OM3
- Halogenfree cable 50/125 μ fibre
- Individually packaged, with test report



	1 m	2 m	3 m	5 m	7 M	10 m	15 m	20 m
ST-ST	AL5STST01I/3I	AL5STST02I/3I	AL5STST03I/3I	AL5STST05I/3I	AL5STST07I/3I	AL5STST10I/3I	AL5STST15I/3I	
SC-SC	AL5SCSC01I/3I	AL5SCSC02I/3I	AL5SCSC03I/3I	AL5SCSC05I/3I	AL5SCSC07I/3I	AL5SCSC10I/3I	AL5SCSC15I/3I	AL5SCSC20I/3I
LC-LC	AL5LCLC01I/3I	AL5LCLC02I/3I	AL5LCLC03I/3I	AL5LCLC05I/3I	AL5LCLC07I/3I	AL5LCLC10I/3I		
ST-SC	AL5STSC01I/3I	AL5STSC02I/3I	AL5STSC03I/3I	AL5STSC05I/3I	AL5STSC07I/3I	AL5STSC10I/3I		
LC-SC	AL5LCSC01I/3I	AL5LCSC02I/3I	AL5LCSC03I/3I	AL5LCSC05I/3I	AL5LCSC07I/3I	AL5LCSC10I/3I	AL5LCSC15I/3I	
LC-ST	AL5LCST01I/3I	AL5LCST02I/3I	AL5LCST03I/3I	AL5LCST05I/3I	AL5LCST07I/3I	AL5LCST10I/3I	AL5LCST15I/3I	

Info

Source Wikipedia Multi-mode optical fiber



Transmission Standards	100Mbps Ethernet	1Gb (1000Mbps) Ethernet	10Gb Ethernet	40Gb Ethernet	100Gb Ethernet
OM1 (62.5/125)	up to 2000 meters (FX)	275 meters (SX)	33 meters (SR)	Not supported	Not supported
OM2 (50/125)	up to 2000 meters (FX)	550 meters (SX)	82 meters (SR)	Not supported	Not supported
OM3 (50/125)	up to 2000 meters (FX)	550 meters (SX)	300 meters (SR)	100 meters 330 meters QSFP+ eSR4	100 meters
OM4 (50/125)	up to 2000 meters (FX)	1000 meters (SX)	550 meters (SR)	150 meters 550 meters QSFP+ eSR4	150 meters

Multimode OM4 Duplex 50/125 μ Patch Cable

- Up to 10 Gbps
- Class OM4
- Halogenfree cable 50/125 μ fibre
- Individually packaged, with test report



	1 m	2 m	3 m	5 m	7 M	10 m
LC-LC	AL5LCLC01I/4I	AL5LCLC02I/4I	AL5LCLC03I/4I	AL5LCLC05I/4I	AL5LCLC07I/4I	AL5LCLC10I/4I
LC-SC	AL5LCSC01I/4I	AL5LCSC02I/4I	AL5LCSC03I/4I	AL5LCSC05I/4I	AL5LCSC07I/4I	AL5LCSC10I/4I

Fiber Optic Pigtail, Simplex

- Class OM1, OM2 and OM3
- Semi Tight buffer
- Single packed with test report



		ST	SC	LC
Multi	om1 62.5/125 μ	AL6FPST02I		
	om2 50/125 μ	AL5FPST02I	AL5FPSC02I	AL5FPLC02I
	om3 50/125 μ	AL5FPST02/3I	AL5FPSC02/3I	AL5FPLC02/3I
Single	09/125 μ	AL9FPST02I	AL9FPSC02I	AL9FPLC02I

Fiber Optic Pigtail 12pcs set

- Simplex OM 2 50/125 μ , 2m
- Semi tight buffer
- Colored buffer, according to IEC 302 in: white, violet, turquoise, black, red, pink, orange, grey, green, yellow, brown, blue



ST	SC	LC
AL5FPST02ISET2	AL5FPSC02ISET2	AL5FPLC02ISET

Fiber Optic

SC Connector

- Multimode / Singlemode
- Crimp version
- Male crimping sleeve and tension relief
- 2x ALWL-SC + clip + 2 kink protection



Multimode	Single mode
ALWLSKD	ALWLSKD9

ST Connector

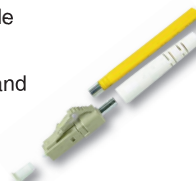
- Multimode / Singlemode
- Crimp version
- Male crimping sleeve and tension relief



Multimode	Singlemode
ALWLST	ALWLST9

LC Connector

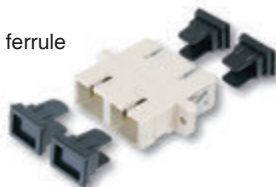
- Multimode / Singlemode
- Crimp version
- Male crimping sleeve and tension relief



Multimode	Single mode
TLWLCCMP	TLWLPL020

SC/SC Coupler Duplex

- Multimode
- Phosphor bronze ferrule
- Plastic / Metal



Plastic	Metal
ALWLSCK1D	TLWLADAP080

ST/ST Coupler Duplex

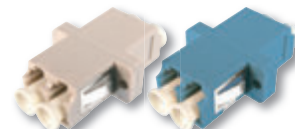
- Multimode / Singlemode
- Phosphor bronze ferrule
- Metal



Multimode	Singlemode
ALWLSTK1	ALWLSTK2

LC/LC Coupler Duplex

- Multimode
- Phosphor bronze ferrule
- Plastic



Grey	Blue
ALWLLC1D	ALWLLC2D

SC/SC Coupler Duplex

- Multimode
- Phosphor bronze ferrule
- Metal



Multimode
TLWLSCK1D

ST/ST Coupler Simplex

- Multimode
- Sleeve metal



Multimode
TLWLSTK1

LC/LC Coupler Duplex

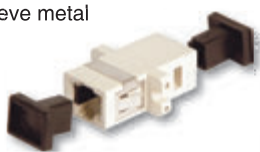
- Multimode
- Phosphor bronze ferrule
- Metal



Multimode
TLWLADAP085

SC/SC Coupler Simplex

- Multimode
- Housing beige, sleeve metal
- With snap-in-latch



Multimode
TLWLSCK2S

ST/ST Coupler Simplex

- Singlemode
- Sleeve ceramic



Singlemode
TLWLADAP055

ST/SC Coupler Duplex

- Multimode
- Phosphor Bronze Ferrule
- Plastic



Multimode
ALWLSTSC1D

SC/SC Coupler Simplex

- Singlemode
- Housing blue, sleeve ceramic, with snap-in fixing



Singlemode
TLWLSCK2SM

SC Simplex Keystone Adapter

- Multimode
- Mounting depth incl. dust cap: 21.5mm (LC dpx.), 12.5mm(ST), 20.5mm (SC)



Multimode	
LKS035	LKS055

SC Simplex Keystone Adapter

- Multimode
- Mounting depth incl. dust cap: 21.5mm (LC dpx.), 12.5mm(ST), 20.5mm (SC)



Multimode	
LKS040	LKS060

SC/SC Coupler Simplex

- Singlemode
- Sleeve ceramic
- Housing Full Metal



Singlemode	Multimode
TLWLADAP010	TLWLADAP060

LC Duplex Keystone Adapter

- Multimode
- Mounting depth incl. dust cap: 21.5mm (LC dpx.), 12.5mm(ST), 20.5mm (SC)



Multimode	
LKS045	LKS050

E2000/APC Keystone Adapter

- E2000 APC8° adapter (RdM) with ceramic sleeve

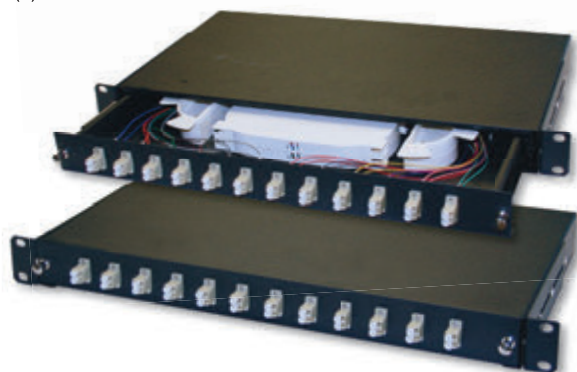


E2000/APC	
LKS065	LKS070

Fiber Optic Splicebox LC

- Completely prefabricated, fiber pigtails exposed and inserted into the splice cassette(s)
- Colored pigtails - Couplers with zirconia ceramic sleeve
- Adapters in polymer housing
- Carrier housing made of 1.5mm sheet steel, varnished
- 1 unit (44.45mm) - 483mm width (19") -280mm depth
- PG 16 screw, cassette, cassette cover and strain relief included
- Sliding

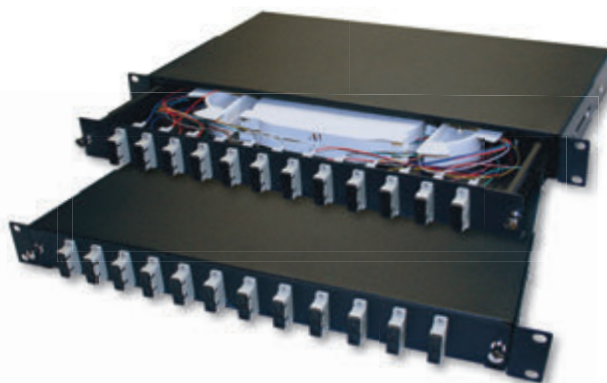
	6 port	12 port	24 port
LC / OM2	LSBLC001	LSBLC005	LSBLC010
LC / OM3	LSBLC015	LSBLC020	LSBLC025
LC / OS1	LSBLC030	LSBLC035	LSBLC040



Fiber Optic Splicebox SC

- Completely prefabricated, fiber pigtails exposed and inserted into the splice cassette(s)
- Colored pigtails - Couplers with zirconia ceramic sleeve
- Adapters in polymer housing
- Carrier housing made of 1.5mm sheet steel, varnished
- 1 unit (44.45mm) - 483mm width (19") -280mm depth
- PG 16 screw, cassette, cassette cover and strain relief included
- Sliding

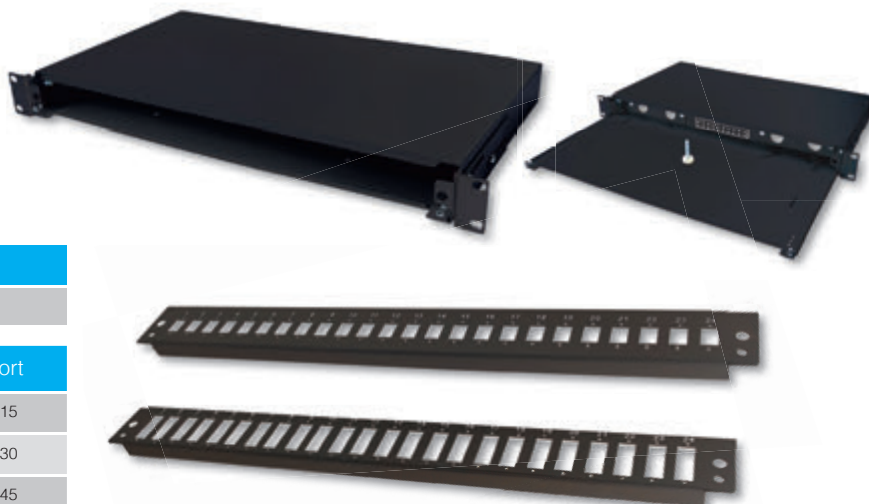
	6 port	12 port	24 port
SC / OM2	LSBSC001	LSBSC005	LSBSC010
SC / OM3	LSBSC015	LSBSC020	LSBSC025
SC / OS1	LSBSC030	LSBSC035	LSBSC040



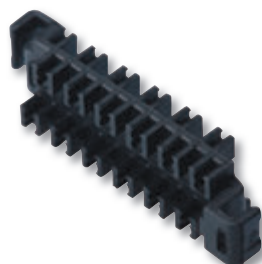
Fiber Optic Splicebox Custom Case and Panel

- Unassembled, without front panel
- Carrier housing made of 1.5mm sheet steel, varnished
- Color: Black RAL 9005
- Width 483mm, depth 220mm, pull-out depth 210mm, depth is adjustable
- Inner dimension approx.: 44 (H) x 428 (W) x 240 (D) mm
- Holder for splice cassettes

Custom Case				
	LBL001			
	6 port	12 port	24 port	
SC Duplex	LSB005	LSB010	LSB015	
SC Simplex	LSB020	LSB025	LSB030	
LC Duplex	LSB035	LSB040	LSB045	



Splice Cassette For 12 Fibers Strain Relief For Optical Fibers Crimp Splice Protection 12pcs



Splice Cassette For 12 Fibers
LSB050

Strain Relief For Optical Fibers
LSB055

Crimp Splice Protection
LSB060

Handwriting practice area with 30 horizontal dotted lines.

Index

A		AL5STSC07I	29	DN93513	25	LBL050	32	TCR6ASS100WH	20	TCR66SS150Y	19
AL5LCLC01I	29	AL5STSC07I/3I	30	DN93601	25	LBL055	32	TCR6ASS100Y	20	TCR66SS200B	19
AL5LCLC01I/3I	30	AL5STSC10I	29	DN93603	25	LBL060	32	TCR6ASS150I	20	TCR66SS200BL	19
AL5LCLC01I/4I	30	AL5STSC10I/3I	30	L		LSBLC001	32	TCR6ASS200I	20	TCR66SS200G	19
AL5LCLC02I	29	AL5STST01I	29	LBC5FTP100	22	LSBLC005	32	TCR6ASS250I	20	TCR66SS200I	19
AL5LCLC02I/3I	30	AL5STST01I/3I	30	LBC5FTP305	22	LSBLC010	32	TCR6ASS300I	20	TCR66SS200R	19
AL5LCLC02I/4I	30	AL5STST02I	29	LBC5FTP500	22	LSBLC015	32	TCR66SS003I	19	TCR66SS200WH	19
AL5LCLC03I	29	AL5STST02I/3I	30	LBC5FTP500OUT	22	LSBLC020	32	TCR66SS005B	19	TCR66SS200Y	19
AL5LCLC03I/3I	30	AL5STST03I	29	LBC5SFTP100	22	LSBLC025	32	TCR66SS005G	19	TCR66SS300B	19
AL5LCLC03I/4I	30	AL5STST03I/3I	30	LBC5SFTP305	22	LSBLC030	32	TCR66SS005I	19	TCR66SS300BL	19
AL5LCLC05I	29	AL5STST05I	29	LBC5UTP305ST	23	LSBLC035	32	TCR66SS005O	19	TCR66SS300I	19
AL5LCLC05I/3I	30	AL5STST05I/3I	30	LBC6UTP305	21	LSBLC040	32	TCR66SS005R	19	TCR66SS300R	19
AL5LCLC05I/4I	30	AL5STST07I	29	LBC6UTP500	21	LSBSC001	32	TCR66SS005V	19	TCR66SS300WH	19
AL5LCLC07I	29	AL5STST07I/3I	30	LBC6UTP500D	21	LSBSC005	32	TCR66SS005WH	19	TCR66SS300Y	19
AL5LCLC07I/3I	30	AL5STST10I	29	LBCC5UTP305	22	LSBSC010	32	TCR66SS005Y	19	TCTK21	32
AL5LCLC07I/4I	30	AL5STST10I/3I	30	LBCC6AFTP500OU	22	LSBSC015	32	TCR66SS010B	19	TCTK22	32
AL5LCLC10I	29	AL5STST15I/3I	30	LBCC6ASFTP500SO	23	LSBSC020	32	TCR66SS010BL	19	TCU66U003B	18
AL5LCLC10I/3I	30	AL6ACST01I	29	LBCC6ASFTP500SO	23	LSBSC025	32	TCR66SS010G	19	TCU66U003BL	18
AL5LCLC10I/4I	30	AL6LCLC01I	29	LBCC6ASSTP305SO	23	LSBSC030	32	TCR66SS010I	19	TCU66U003G	18
AL5LCLC15I	29	AL6LCLC02I	29	LBCC6ASUTP500	22	LSBSC035	32	TCR66SS010O	19	TCU66U003I	18
AL5LCLC20I	29	AL6LCLC05I	29	LBCC6AUTP305	21	LSBSC040		TCR66SS010R	19	TCU66U003O	18
AL5LCLC01I/3I	30	AL6LCLC10I	29	LBCC6AUTPST	23	T	32	TCR66SS010Y	19	TCU66U003W	18
AL5LCLC01I/4I	30	AL6LCLC15I	29	LBCC6AUTPST-B	23	TCR6ASS003R	20	TCR66SS0015B	19	TCU66U003Y	18
AL5LCLC02I/3I	30	AL6LCSC01I	29	LBCC6AUTPST-BL	23	TCR6ASS005B	20	TCR66SS0015BL	19	TCU66U005B	18
AL5LCLC02I/4I	30	AL6LCSC02I	29	LBCC6AUTPST-G	23	TCR6ASS005BL	20	TCR66SS015BL	19	TCU66U005BL	18
AL5LCLC03I/3I	30	AL6LCSC05I	29	LBCC6AUTPST-R	23	TCR6ASS005G	20	TCR66SS0015G	19	TCU66U005G	18
AL5LCLC03I/4I	30	AL6LCSC10I	29	LBCC6AUTPST-Y	23	TCR6ASS005I	20	TCR66SS015G	19	TCU66U005I	18
AL5LCLC05I/3I	30	AL6LCST02I	29	LBCC6SUTP305SO	22	TCR6ASS005O	20	TCR66SS0015I	19	TCU66U005W	18
AL5LCLC05I/4I	30	AL6LCST05I	29	LBCC6SUTP500SO	22	TCR6ASS005R	20	TCR66SS015I	19	TCU66U005Y	18
AL5LCLC07I	29	AL6LCST10I	29	LBCC6SUTP1000S	22	TCR6ASS005V	20	TCR66SS015O*	19	TCU66U010B	18
AL5LCLC07I/3I	30	AL6LCST15I	29	LBC6UTP305	21	TCR6ASS005WH	20	TCR66SS0015R	19	TCU66U010BL	18
AL5LCLC07I/4I	30	AL6LCST20I	29	LBCC6UTP305	23	TCR6ASS005Y	20	TCR66SS015R	19	TCU66U010G	18
AL5LCLC10I/3I	30	AL6MTRJMTJR02I	29	LBCROLLER	23	TCR6ASS010B	20	TCR66SS0015Y	19	TCU66U010I	18
AL5LCLC10I/4I	30	AL6MTRJMTJR03I	29	LBCUTPST	23	TCR6ASS010BL	20	TCR66SS015Y	19	TCU66U010O	18
AL5LCLC15I	29	AL6MTRJSC01I	29	LBL001	32	TCR6ASS010BL	20	TCR66SS020B	19	TCU66U010W	18
AL5LCLC15I/3I	30	AL6SCSC01I	29	LKS001	25	TCR6ASS010G	20	TCR66SS020BL	19	TCU66U010Y	18
AL5LCLCST01I	29	AL6SCSC02I	29	LKS005	25	TCR6ASS010I	20	TCR66SS020BL	19	TCU66U010Y	18
AL5LCLCST01I/3I	30	AL6SCSC05I	29	LKS010	25	TCR6ASS010O	20	TCR66SS020G	19	TCU66U0015B	18
AL5LCLCST02I	29	AL6SCSC10I	29	LKS015	25	TCR6ASS010R	20	TCR66SS020I	19	TCU66U015B	18
AL5LCLCST02I/3I	30	AL6SCSC15I	29	LKS020	25	TCR6ASS010V	20	TCR66SS020O	19	TCU66U0015BL	18
AL5LCLCST03I	29	AL6STSC01I	29	LKS025	25	TCR6ASS010WH	20	TCR66SS020R	19	TCU66U015BL	18
AL5LCLCST03I/3I	30	AL6STSC02I	29	LKS030	25	TCR6ASS010Y	20	TCR66SS020V	19	TCU66U0015G	18
AL5LCLCST05I	29	AL6STSC05I	29	LKS035	31	TCR6ASS020B	20	TCR66SS020WH	19	TCU66U015G	18
AL5LCLCST05I/3I	30	AL6STSC10I	29	LKS040	31	TCR6ASS020BL	20	TCR66SS020Y	19	TCU66U0015I	18
AL5LCLCST07I/3I	30	AL6STST01I	29	LKS045	31	TCR6ASS020G	20	TCR66SS030B	19	TCU66U015I	18
AL5LCLCST10I	29	AL6STST02I	29	LKS050	31	TCR6ASS020I	20	TCR66SS030BL	19	TCU66U0015O	18
AL5LCLCST10I/3I	30	AL6STST05I	29	LKS055	31	TCR6ASS020O	20	TCR66SS030G	19	TCU66U015O	18
AL5LCLCST15I/3I	30	AL6STST10I	29	LKS060	31	TCR6ASS020R	20	TCR66SS030I	19	TCU66U0015W	18
AL5MTRJMTJ01I	29	AL6STST15I	29	LKS065	31	TCR6ASS020V	20	TCR66SS030O	19	TCU66U015W	18
AL5MTRJMTJR02I	29	AL6STST20I	29	LKS070	31	TCR6ASS020WH	20	TCR66SS030R	19	TCU66U0015Y	18
AL5MTRJSC02I	29	AL9E2000LC1I	29	LKS075	25	TCR6ASS020Y	20	TCR66SS030WH	19	TCU66U015Y	18
AL5MTRJSC03I	29	AL9E2000LC2I	29	LKS080	25	TCR6ASS030B	20	TCR66SS030Y	19	TCU66U020B	18
AL5MTRJST01I	29	AL9E2000LC3I	29	LKS085	25	TCR6ASS030BL	20	TCR66SS050B	19	TCU66U020BL	18
AL5MTRJST03I	29	AL9E2000LC5I	29	LKS090	25	TCR6ASS030G	20	TCR66SS050BL	19	TCU66U020G	18
AL5SCSC01I	29	AL9E2000SC1I	29	LKS095	25	TCR6ASS030I	20	TCR66SS050G	19	TCU66U020I	18
AL5SCSC01I/3I	30	AL9E2000SC2I	29	LKS100	25	TCR6ASS030O	20	TCR66SS050I	19	TCU66U020O	18
AL5SCSC02I	29	AL9E2000SC3I	29	LKS105	25	TCR6ASS030R	20	TCR66SS050O	19	TCU66U020W	18
AL5SCSC02I/3I	30	AL9E2000SC5I	29	LKS200	26	TCR6ASS030V	20	TCR66SS050R	19	TCU66U020Y	18
AL5SCSC03I	29	AL9E2000I	29	LKS205	26	TCR6ASS030WH	20	TCR66SS050WH	19	TCU66U030B	18
AL5SCSC03I/3I	30	AL9E20002I	29	LKS210	26	TCR6ASS030Y	20	TCR66SS050Y	19	TCU66U030BL	18
AL5SCSC05I	29	AL9E20003I	29	LKS215	26	TCR6ASS050B	20	TCR66SS070B	19	TCU66U030G	18
AL5SCSC05I/3I	30	AL9E20005I	29	LKS220	25	TCR6ASS050BL	20	TCR66SS070G	19	TCU66U030I	18
AL5SCSC07I	29	ALWLE2000	29	LKS225	25	TCR6ASS050G	20	TCR66SS070I	19	TCU66U030O	18
AL5SCSC07I/3I	30	ALWLLC1D	31	LKS230	25	TCR6ASS050I	20	TCR66SS070R	19	TCU66U030W	18
AL5SCSC10I	29	ALWLLC2D	31	LKS235	25	TCR6ASS050O	20	TCR66SS070Y	19	TCU66U030Y	18
AL5SCSC10I/3I	30	ALWLSCD	31	LPP100	24	TCR6ASS050R	20	TCR66SS100B	19	TCU66U050B	18
AL5SCSC15I/3I	30	ALWLSCD9	31	LPP105	24	TCR6ASS050V	20	TCR66SS100G	19	TCU66U050BL	18
AL5SCSC20I/3I	30	ALWLSCK1D	31	LPP110	24	TCR6ASS050WH	20	TCR66SS100I	19	TCU66U050G	18
AL5STSC01I	29	ALWLST	31	LSB005	32	TCR6ASS050Y	20	TCR66SS100R	19	TCU66U050I	18
AL5STSC01I/3I	30	ALWLST9	31	LSB010	32	TCR6ASS070I	20	TCR66SS100V	19	TCU66U050O	18
AL5STSC02I	29	ALWLSTK1	31	LSB015	32	TCR6ASS100B	20	TCR66SS100WH	19	TCU66U050W	18
AL5STSC02I/3I	30	ALWLSTK2	31	LSB020	32	TCR6ASS100BL	20	TCR66SS100Y	19	TCU66U050Y	18
AL5STSC03I	29	D		LSB025	32	TCR6ASS100G	20	TCR66SS150B	19	TCU66U070B	18
AL5STSC03I/3I	30	DN10001	24	LSB030	32	TCR6ASS100I	20	TCR66SS150G	19	TCU66U070BL	18
AL5STSC05I	29	DN91612S	24	LSB035	32	TCR6ASS100O	20	TCR66SS150I	19	TCU66U070G	18
AL5STSC05I/3I	30	DN93502	25	LSB040	32	TCR6ASS100R	20	TCR66SS150R	19	TCU66U070I	18
				LSB045	32	TCR6ASS100V	20	TCR66SS150WH	19	TCU66U070O	18

TCU66U070W	18	TDN19ORG3U-BL	9	TDN19TRAY2-BL	10	TDN1907U66W	13	TDN1916U68W	13	TDN1942U88W	7
TCU66U070Y	18	TDN19ORG3UW	9	TDN19TRAY2-BL	12	TDN1907U66W	14	TDN1916U68W	14	TDN1942U88W	13
TCU66U100B	18	TDN19ORG6U-BL	9	TDN19TRAY2W	10	TDN1907U-BL	6	TDN1916U-BL	6	TDN1942U88W	14
TCU66U100BL	18	TDN19ORG6UW	9	TDN19TRAY2W	12	TDN1907U-BL	11	TDN1916U-BL	11	TDN1942U610-BL	7
TCU66U100G	18	TDN19ORG8U-BL	9	TDN19TRAY110BL	10	TDN1907US-BL	6	TDN1916UW	6	TDN1942U610-BL	13
TCU66U100I	18	TDN19ORG8UW	9	TDN19TRAY110BL	12	TDN1907US-BL	11	TDN1916UW	11	TDN1942U610W	7
TCU66U100O	18	TDN19ORG10U-BL	9	TDN19TRAY110W	10	TDN1907USW	6	TDN1922U66-BL	7	TDN1942U610W	13
TCU66U100W	18	TDN19ORG10UW	9	TDN19TRAY110W	12	TDN1907USW	11	TDN1922U66-BL	13	TDN1947U68-BL	7
TCU66U100Y	18	TDN19ORG11U-BL	9	TDN19TRAY130BL	10	TDN1907UW	6	TDN1922U66W	7	TDN1947U68-BL	13
TCU66U150B	18	TDN19ORG11UW	9	TDN19TRAY130BL	12	TDN1907UW	11	TDN1922U66W	13	TDN1947U68-BL	14
TCU66U150BL	18	TDN19PB2U-BL	6	TDN19TRAY130W	10	TDN1909U3-BL	6	TDN1922U68-BL	7	TDN1947U68W	7
TCU66U150G	18	TDN19PB2UW	6	TDN19TRAY130W	12	TDN1909U3-BL	11	TDN1922U68-BL	13	TDN1947U68W	13
TCU66U150I	18	TDN19PB2UW	6	TDN19TRAY140BL	10	TDN1909U3W	6	TDN1922U68-BL	14	TDN1947U68W	14
TCU66U150O	18	TDN19PB4U-BL	6	TDN19TRAY140BL	12	TDN1909U3W	11	TDN1922U68W	7	THTLSA+	24
TCU66U150W	18	TDN19PB8U-BL	6	TDN19TRAY140W	10	TDN1909U66-BL	7	TDN1922U68W	13	THTLSAK	24
TCU66U150Y	18	TDN19PB8UW	6	TDN19TRAY140W	12	TDN1909U66-BL	13	TDN1922U68W	14	TLWLADAP010	31
TCU66U200B	18	TDN19SET	15	TDN19TRAY160BL	10	TDN1909U66-BL	14	TDN1926U68-BL	7	TLWLADAP060	31
TCU66U200BL	18	TDN19SET1	15	TDN19TRAY160BL	12	TDN1909U66W	7	TDN1926U68-BL	13	TLWLADAP080	31
TCU66U200G	18	TDN19SRV18UL	8	TDN19TRAY160W	10	TDN1909U66W	13	TDN1926U68-BL	14	TLWLADAP085	31
TCU66U200I	18	TDN19SRV18UL	11	TDN19TRAY160W	12	TDN1909U66W	14	TDN1926U68W	7	TLWLLCCMP	31
TCU66U200Y	18	TDN19SRV18UL	14	TDN19TRAY165BL	10	TDN1909U-BL	6	TDN1926U68W	13	TLWLPL020	31
TCU66U250I	18	TDN19SRV18UW	8	TDN19TRAY165BL	12	TDN1909U-BL	11	TDN1926U68W	14	TLWLSCK1D	31
TCU66U300B	18	TDN19SRV18UW	11	TDN19TRAY165W	10	TDN1909US-BL	6	TDN1926U610-BL	7	TLWLSCK2SM	31
TCU66U300BL	18	TDN19SRV18UW	14	TDN19TRAY165W	12	TDN1909US-BL	11	TDN1926U610-BL	13	TLWLSTK1	31
TCU66U300G	18	TDN19SRV26UL	8	TDN19TRAY175BL	10	TDN1909USW	6	TDN1926U610W	13	TMWRJ40CA	25
TCU66U300I	18	TDN19SRV26UL	11	TDN19TRAY175BL	12	TDN1909USW	11	TDN1932U66-BL	7	TMWRJ45CA	25
TCU66U300Y	18	TDN19SRV26UL	14	TDN19TRAY175W	10	TDN1909UW	6	TDN1932U66-BL	13	TPP12RU	24
TDN19BPD03-BL	15	TDN19SRV26UW	8	TDN19TRAY175W	12	TDN1909UW	11	TDN1932U66W	7	TPP16SI	26
TDN19BPD03W	15	TDN19SRV26UW	11	TDN19TRAY180BL	10	TDN1912U3-BL	6	TDN1932U66W	13	TPP24S	24
TDN19BPD04-BL	15	TDN19SRV26UW	14	TDN19TRAY180BL	12	TDN1912U3-BL	11	TDN1932U68-BL	7	TPP24SI	26
TDN19BPD04W	15	TDN19SRV36UL	8	TDN19TRAY180W	10	TDN1912U3W	6	TDN1932U68-BL	13	TPP24SI6	26
TDN19BPN01-BL	15	TDN19SRV36UL	11	TDN19TRAY180W	12	TDN1912U3W	11	TDN1932U68-BL	14	TPP24SIB	26
TDN19BPN01W	15	TDN19SRV36UL	14	TDN19TRAYUNI	10	TDN1912U66-BL	7	TDN1932U68W	13	TPP32SI	26
TDN19BPN02-BL	15	TDN19SRV36UW	8	TDN19TRAYUNI	12	TDN1912U66-BL	13	TDN1932U68W	14	TPP48U5B	24
TDN19BPN02W	15	TDN19SRV36UW	11	TDN19TRAYUNI	10	TDN1912U66-BL	14	TDN1932U88-BL	7	TPP48U6B	24
TDN19FAN2WMTBL	14	TDN19SRV36UW	14	TDN19TRAYUNI	12	TDN1912U66W	7	TDN1932U88-BL	13	TPPDUM01	24
TDN19FAN4HO-BL	14	TDN19SRV42U8L	8	TDN19WALL	5	TDN1912U66W	13	TDN1932U88-BL	14	TWP8P8CR	21
TDN19FAN6-BL	14	TDN19SRV42U8L	11	TDN1932U68W	7	TDN1912U66W	14	TDN1932U88W	7	TWP8P8CR-6	21
TDN19FAN466BL	14	TDN19SRV42U8L	14	TDN1005UL	5	TDN1912U-BL	6	TDN1932U88W	13	TWP8P8CRIN	21
TDN19FAN468BL	14	TDN19SRV42U8W	8	TDN1005ULW	5	TDN1912U-BL	11	TDN1932U88W	14	TWP8P8CRIN-5	21
TDN19FAN488BL	14	TDN19SRV42U8W	11	TDN1008UL	5	TDN1912US-BL	6	TDN1932U610W	7	TWP8P8CRIN-6	21
TDN19FAN4610BL	14	TDN19SRV42U8W	14	TDN1008ULW	5	TDN1912US-BL	11	TDN1936U610-BL	7	TWP8P8CSRS	21
TDN19FAN46010BL	14	TDN19SRV42U12L	8	TDN1906U3-BL	6	TDN1912USW	6	TDN1936U610-BL	13	TWP8P8CSRS-6	21
TDN19FAN48010BL	14	TDN19SRV42U12L	11	TDN1906U3-BL	11	TDN1912USW	11	TDN1936U610W	7	TWP8P8SRS6	21
TDN19KEY1U-BL	15	TDN19SRV42U12L	14	TDN1906U3W	6	TDN1912UW	6	TDN1936U610W	13	TWPCBOOTB	21
TDN19KEY1UW	15	TDN19SRV42U12W	8	TDN1906U3W	11	TDN1912UW	11	TDN1942U66-BL	7	TWPCBOOTG	21
TDN19KEY2U-BL	15	TDN19SRV42U12W	11	TDN1906U-BL	6	TDN1916U3-BL	6	TDN1942U66-BL	13	TWPCBOOTN	21
TDN19KEY2UW	15	TDN19SRV42U12W	14	TDN1906U-BL	11	TDN1916U3-BL	11	TDN1942U66W	7	TWPCBOOTR	21
TDN19KEY3U-BL	15	TDN19SRV42UL	8	TDN1906UW	6	TDN1916U3W	6	TDN1942U66W	13	TWPCBOOTU	21
TDN19KEY3UW	15	TDN19SRV42UL	11	TDN1906UW	11	TDN1916U3W	11	TDN1942U68-BL	7	TWPCBOOTY	21
TDN19KEYLT-BL	15	TDN19SRV42UL	14	TDN1907U3-BL	6	TDN1916U66-BL	7	TDN1942U68-BL	13	TWPHT300	26
TDN19KEYLTW	15	TDN19SRV42UW	8	TDN1907U3-BL	11	TDN1916U66-BL	13	TDN1942U68-BL	14	TWPHT2008R	26
TDN19ORG-1BL	9	TDN19SRV42UW	11	TDN1907U3W	6	TDN1916U66W	7	TDN1942U68W	7	TWPHT2009	26
TDN19ORG1U-BL	9	TDN19SRV42UW	14	TDN1907U3W	11	TDN1916U66W	13	TDN1942U68W	13	TWPHT2098	26
TDN19ORG1UW	9	TDN19TRAY1-BL	10	TDN1907U66-BL	7	TDN1916U68-BL	7	TDN1942U68W	14	TWPHT2115	26
TDN19ORG1W	9	TDN19TRAY1-BL	12	TDN1907U66-BL	13	TDN1916U68-BL	13	TDN1942U88-BL	7		
TDN19ORG2U-BL	9	TDN19TRAY1W	10	TDN1907U66-BL	14	TDN1916U68-BL	14	TDN1942U88-BL	13		
TDN19ORG2UW	9	TDN19TRAY1W	12	TDN1907U66W	7	TDN1916U68W	7	TDN1942U88-BL	14		

Opening Hours / Contact





23, BLVD. J. BERTRAND
 6000 CHARLEROI
BELGIUM
 Tél: (0)71 31.80.91
 Fax: (0)71 31.17.67
 Sos: (0)71 70.15.27
WWW.ADAMSCOMPUTER.COM
 MEILLEURS PRIX AVEC CONSEILS ET SERVICE COMPRIS
 YOUR PARTNER OF CONFIDENCE SINCE 1986
B2C - B2B - B2D




LUNDI > VENDREDI
 9:30 > 18 H
 SAMEDI
 9:30 > 12:30 H
 INFO@ADAMSCOMPUTER.COM
 SOS@ADAMSCOMPUTER.COM

AUDIO • VIDEO • ELECTRO • IT • TELECOM • PHOTO • CCTV • SAT



 **ADAMS**
COMPUTER 

23, BLVD. J. BERTRAND
6000 CHARLEROI
BELGIUM
Tél: (0)71 31.80.91
Fax: (0)71 31.17.67
SOS: (0)71 70.15.27

SELEXION
meilleur et pas plus cher 

LUNDI > VENDREDI
9:30 > 18 H
SAMEDI
9:30 > 12:30 H
INFO@ADAMSCOMPUTER.COM
SOS@ADAMSCOMPUTER.COM

WWW.ADAMSCOMPUTER.COM
MEILLEURS PRIX AVEC CONSEILS ET SERVICE COMPRIS
YOUR PARTNER OF CONFIDENCE SINCE 1986
B2C - B2B - B2D

AUDIO • VIDEO • ELECTRO • IT • TELECOM • PHOTO • CCTV • SAT